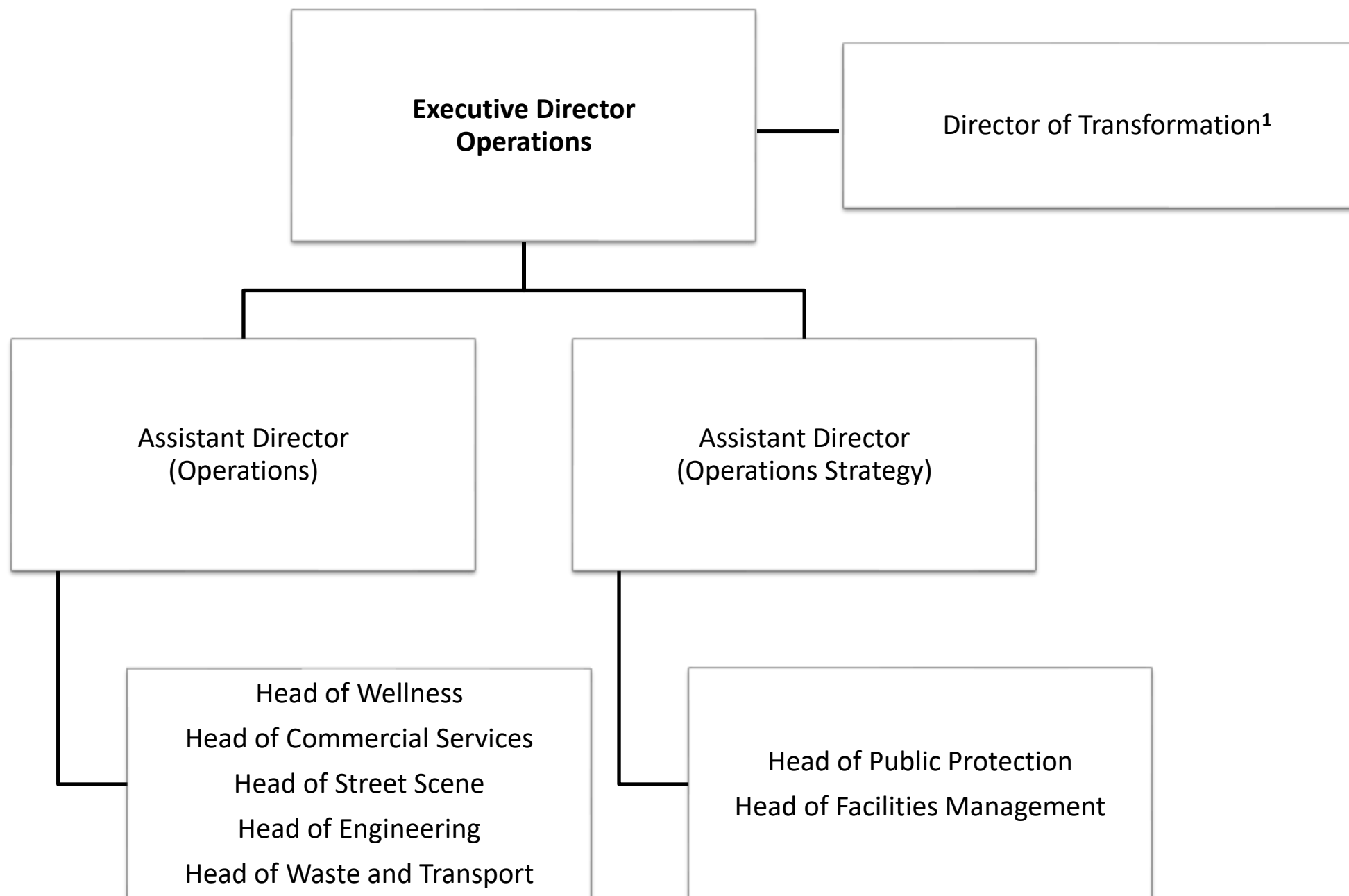


## Bury Council Operations Senior Leadership Structure

The structure chart below includes members of the Bury Council Operations Management Team (the Executive Director and their direct reports) and those management posts directly reporting to them. The data reflects the Council structure as of August 2023

All posts can be contacted via the Council main switchboard on 0161 253 5000 and at Bury Town Hall, Knowsley Street, Bury BL9 0SW.



<sup>1</sup> This post holder is working with Bury Council on secondment for a time limited period.  
Information on their salary is therefore not included within the detailed information on employee salaries.