

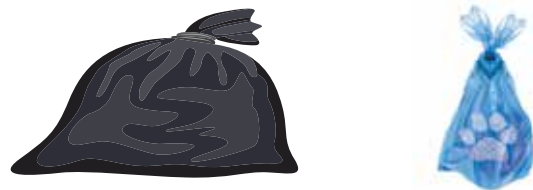
Recycle the right items in the right bin

Grey bin

Bagged
waste you
can't recycle



Plastic packaging, packets and film



Bagged waste and pet waste



Nappies and hygiene products
(in a tied bag)

Save space in your bin

- Squash and flatten items
- Squeeze air out of plastic bags
- Recycle plastic pots, tubs and trays in your blue bin

NO batteries and NO vapes

DO NOT put these
in any of your bins,
they can explode
and catch fire.

For recycling points
see recyclenow.com

