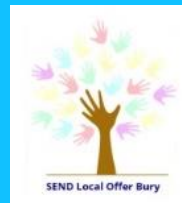


Bury SEND



LOCAL OFFER NEWSLETTER

February 2024

Bury
Council



SEND Practice Learning Event

5th February 2024-16th February 2024



"Learning together to make a difference"

BURY
LET'S Do It!

NHS
Greater Manchester
Integrated Care

Bury
COUNCIL

SEND Communications and Engagement:

Please **subscribe** to the Local Offer mailing list by:

Email: SEND.Localoffer@bury.gov.uk

Tel: 07581020879 or 0161 253 6087

Follow us on Twitter [@BuryLocalOffer](https://twitter.com/BuryLocalOffer)

Facebook: [Bury SEND Local Offer](https://www.facebook.com/BurySENDLocalOffer)

Bury2Gether Parent/Carer Forum:
www.bury2gether.co.uk/membership



Bury's Children's Disability Register


Bury Council is required to have a register of children and young people with a disability to communicate with parents/carers effectively. It will also be used to assist service planning to meet the needs of children and young people with disabilities and their families.'

Children and young people's names are added to the register at their parent's request and the information held on the register will be confidential and stored on our secure database.

The Disability Register form can be downloaded or completed online by visiting the Bury Council website at:
www.bury.gov.uk
or
scan the QR code.



Alternatively you can pickup a copy of the form at the Bury SEND Hub in Radcliffe.





SEND Parent Carer Engagement Evening

Our next Parent Carer Engagement Evening will be online with Jeanette Richards - Executive Director for Children and Young People on

Thursday 15th February 2024, 7.00pm - 8.00pm

If you would like to attend the evening, please email bury2gether@gmail.com for the online link. If you have any questions you would like to ask, please email them in advance of the meeting.



SEND Practice Learning Event

5th February 2024-16th February 2024



On the 5th February 2024 until 16th February 2024 there will be a SEND Practice Learning Event in Bury. This event is an opportunity to learn about each SEND practice's offer by attending an online learning session or face to face drop-in. A timetable of various learning sessions is available for parent carers, young people, and professionals to sign up to. A more detailed timetable of what is on offer can be found by clicking on the related file on the Local Offer at: www.theburydirectory.co.uk/send-practice-learning-event-2024

MONDAY 5 TH FEBRUARY		TUESDAY 6 TH FEBRUARY		WEDNESDAY 7 TH FEBRUARY		THURSDAY 8 TH FEBRUARY		FRIDAY 9 TH FEBRUARY	
12 pm-1 pm	The role of the Early Years SEN Team ONLINE	10am-11am	Planning the future of Bury's Educational (and Community) Psychology Service ONLINE	9.30am-10am	Graduated Approach Toolkit Familiarisation session for services ONLINE	9.15am-12.15pm	SENCO Support Surgery Elmsbank College	8.30am-12.30pm	Teaching Assistant Developmental Drop-in Elmsbank College
1pm-2pm	Meet the 'Children with Disabilities Team' ONLINE	12pm-2pm	BURY2GETHER Parent/Carer Forum and the Bee Inclusive Team Face to face drop-in. Bury SEND Hub, Westminster Ave, Radcliffe	10am-11am	Childrens Disability Team- Short Breaks Offer ONLINE	10am-12pm	Secret Garden Hoyles Park community forest school Hoyles Park-Bury	9.30am-10.00am	Rehabilitation for Independence- Sensory Workshop ONLINE
		1pm-2pm	SENDiass: SEN support workshop ONLINE	1pm-2.30pm	Speech, Language and Communication ONLINE	8.30am-8.45am	SEND Outreach Service-What support is offered. ONLINE	1pm-3pm	Information session about the EHC assessment process ONLINE
MONDAY 12 TH FEBRUARY		TUESDAY 13 TH FEBRUARY		WEDNESDAY 14 TH FEBRUARY		THURSDAY 15 TH FEBRUARY		FRIDAY 16 TH FEBRUARY	
10am-11am	Children's Health Services- What is the Childrens Dynamic Support Register ONLINE	9.30am-10.30am	SEND Outreach Support-Awareness training on Unconditional Positive Regard (UPR) ONLINE	10am-12pm	EHC Team- Annual Review support Session for SENCOs ONLINE	9.30am-10.00am	Graduated Approach Toolkit -Familiarisation session for services ONLINE	11am-11.30am	The Local Offer co-production session ONLINE
10am-12pm	First Point Family Support Services Coffee and Catchup Drop-in Fishpool Liberal Club Nelson Street Bury BL9 9HX			10am-12pm	Bury SENDiass - SEN Support & Reasonable Adjustments Bury SEND Hub, Westminster Ave, Radcliffe M26 3WD	1pm-2.30pm & 2.30pm-4pm	Awareness raising of Vision Impairment /Hearing Impairment in the workplace. 3 Knowsley Place, Bury BL9 0EJ		
12pm-1pm	SEND Early Years Practice- The role of the Early Years SEN Team ONLINE			2pm-4pm	Understanding and supporting young people and families where Selective Mutism presents ONLINE	3.45pm-4.00pm	SEND Outreach Service-What support is on offer ONLINE		
Further details of the Learning sessions on offer can be found by clicking on this link: www.theburydirectory.co.uk/send-practice-learning-event-2024									

SPEAK ENQUIRE KNOW DISCUSS



What's on in February 2024

Event	Date	Time	Details
SEND Practice Learning Event Everyone welcome	5/2/24 -15/2/24 Varied timetable		Further details of the Learning sessions on offer can be found by clicking on this link: <u>SEND Practice Learning sessions timetable</u>
Children and Young People MH Focus Group	9/2/24	10.00am-12.00pm	Parent Carer focus group discussion to help shape the development of emotional wellbeing services for children in Bury. Online session. Email Marina.Nixon@nhs.net for the online link.
BURY2GETHER Parent Carer Engagement Evening Everyone welcome	15/2/24	7.00pm-8.00pm	Online session- Please email BURY2GETHER for the link to join online at <u>bury2gether@gmail.com</u>
Parent Case Surgery with Michael Kemp	21/2/24	12.00pm-2.00pm	Do you have concerns about your child's EHC Plan. An opportunity to book a private appointment to talk through the plan and any issues you may have. Book a designated time slot with the SEND Communications and Engagement Officer on 07581020879 or email: <u>Kasia.Taylor@bury.gov.uk</u> Based on a first come first served.
Children's Health Engagement Event- Informal Drop-in event for parent carers Everyone welcome	27/2/24	10.30-12.00pm	Find out what progress has been made in Children's Health Services for SEND. An opportunity to listen and have your say what works and what doesn't work for you and your child Sedgley Community Centre, Bishops Road, Prestwich M25 0HT
BURY2GETHER Care and Convo Session- Drop-in Everyone welcome	29/2/24	7.00pm-8.00pm	Coffee and catchup. A support group for parent carers of children/Young People with SEND. Venue-Bury SEND Hub

Bury Local Area SEND Inspection

Ofsted and the Care Quality Commission (CQC) are visiting the area, as part of an inspection and will be looking at arrangements for children and young people with special educational needs and/or disabilities (SEND).

Ofsted would like to hear from parents, carers, children, and young people about the support that we provide to children and young people with SEND. They would also like to hear from practitioners so as to understand how we work with other agencies to ensure children and young people receive the right support.

Questionnaire : <https://ofsted.smartsurvey.co.uk/p/AreaSend/10299863>

Guidance and more information can be found <https://www.gov.uk/government/publications/local-area-send-inspections-information-for-families>

Your views are important to us and will help inspectors understand your child's experience of the SEND arrangements within your area. The survey will close at 9am on 6 February 2024.

The survey is voluntary, and you do not have to take part. The responses will complement the evidence collected by inspectors during the inspection. We do not ask for your name.

If you complete this survey, you consent to the transfer of your information from SmartSurvey to Ofsted.

For more information about how CQC and Ofsted collect and use data during inspections please see their individual privacy policies: CQC privacy statement; Ofsted privacy policy

School & College Transport Team

The policy for travel arrangements for children and young people with special education needs and disability was last reviewed in 2015.

The Council committed to reviewing the existing policy to ensure it meets statutory requirements as set out by the Department for Education (DfE) in June 2023.

Working with Bury2gether, a series of engagement sessions have been held with parents and carers to understand the barriers families may be facing with the existing home to school transport policy and to consider how we can better support young people and their families. I would like to thank all parents and professionals that were able to attend the meetings, we have received valuable feedback that will be taken into consideration when co-producing the new policy.

Following the final engagement session on Tuesday 30th January 2024 the Council will commence an online consultation.

The consultation will focus on the key themes that have been raised during the engagement sessions. All stakeholders including children/young people and their families, school staff and all professionals involved with supporting children and young people with SEND will be invited to submit their thoughts/feedback using an online form.

The consultation will run for a minimum of 28 working days commencing February 2024 during the Spring term. Communication regarding the consultation will be issued to all stakeholders via email and will be published on the Council's website and social media channels.

It is proposed to present a report to the Council's Cabinet in March responding to the outcome of the consultation and making recommendations in respect of a new policy.



Children's Mental Health Week will take place between the 5th and 11th February this year to empower, equip and give a voice to all children and young people in the UK. This is a good time to share our Thriving in Bury digital app with our children and young people, as it enables them to easily access information and support to manage their mental health and emotional wellbeing. The app provides easy access to information on local support services, self-help materials, youth groups, emotional concerns and issues, national helplines and digital mental health support.

<https://padlet.com/ThriveinBury/YoungPeople>

<https://padlet.com/ThriveinBury/ParentandCarers>

<https://padlet.com/ThriveinBury/Professionals>

<https://padlet.com/ThriveinBury/Education>



Children and Young People's Emotional Wellbeing Services in Bury



Focus Group

We want to hear from parents and carers...



Join us for the second focus group discussion to help shape the development of emotional wellbeing services for our children and young people in Bury.

Friday 9th February
10am to 12pm

Online Meeting via Teams





To register your place or for more information email :
marina.nixon@nhs.net

Waiting list initiatives and recruitment for psychological therapies.

So far we have successfully recruited SIX new staff!! We are excited to let you know that Bury CAMHS now have the following practitioners join our team.....

A Qualified Systemic family practitioner, a Trainee Systemic practitioner, a Trainee CBT therapist, a Qualified CBT therapist, a Qualified Child and Young person wellbeing practitioner (CYPWP) and a Trainee Child and Young person wellbeing practitioner (CYPWP).

Parent workshops

- A number of our Pathway leads at Bury CAMHS are offering training/teaching seminars for any parent carers to attend, titled “How to support your child with....” With a number of topics which include anxiety and low mood, self harm, emotional dysregulation, autism and ADHD, etc.
- These start on the 31st January and run until November this year. We will be offering this as a rolling programme. If parents are interested in this they can **express their interest and further details @ our email address pcn-tr.hymresource@nhs.net.**
- Please advise parents that these places are booked on a first come first serve basis and numbers are limited. If they do not get place initially they will be allocated for a place on the next group.

CAMHS Single Point of Access (SPOA) referrals team

We are currently trialling our SPOA team in- house with a view to work within the MASH (Multi Agency Safeguarding Hub) and Early help premises later this year. The SPOA will enable children, young people and families to access the appropriate services and the help they need quickly and easily. We will keep you updated regarding any additional progress and our future plans!

CAMHS link team update

- Currently our Link team Mental health practitioner Shazna is providing a consultation offer to the Bury Youth offending (YOT) with the view to support the service in best supporting their service users mental health and emotional wellbeing and improving outcomes via advice, assessment, signposting and onwards referrals – this is dependent on the young persons individual needs and presentation.
- We have also employed a SECOND Mental health Link worker.....this means we will have a full CAMHS Link team!

Update from our Children's Health Services

Last month we engaged with Spectrum Gaming to help us better understand how we can support the needs of young people with Autism- they provided us with a report that we are working through with CAMHS and SG to see what changes can be progressed in the short, medium and long term . [CAMHS Emotional Wellbeing Report.pdf - Google Drive](#)

Further to this we are developing a **Young Persons Post diagnostic support offer** - We have engaged with Spectrum Gaming to begin to coproduce a post diagnostic support offer for young people delivered by autistic young people. Coproduction sessions planned with Young People and Parents February and March.

Based on feedback from our sessions, CAMHS are also establishing a new parent support group, look out for the dates which will be coming out soon.

We have held engagement sessions with parents and based on their feedback, Jo our Designated Clinical Officer for SEND is going to set some time aside to be available for brief sessions if people have health pathway queries. Jo already receives a number of queries from parents, however after listening to parents, we are going to trial a different way of offering that support during February.

The DCO has set out 4 consecutive sessions of 30 minutes per week which parents can contact Jo directly to book onto through e mail joanne.mcmaster2@nhs.net over February these will be:

Friday 2nd February 2024	12:30pm-14:30pm
Wednesday 7th February 2024	10.00am till 12.00pm
Monday 12th February 2024	11:30am-1:30pm
Monday 19th February 2024	11.00am- 1.00pm
Monday 26th February 2024	10.00am till 12.00pm



Bury SENDiass is an impartial service who offer information, advice and support around issues relating to SEND. You can contact via telephone (01706 769634), email (bury.sendiass@barnardos.org.uk), or by visiting our website <https://barnardosendiass.org.uk/bury-sendiass/>. We have also arranged several sessions in the community, where you can access information, advice and support face to face.

Appointment and Drop-in sessions:

East Bury Family Hub (by appointment only)

25 Dorset Drive, BL9 9DN

7th March, 9th May, 4th July

Please contact bury.sendiass@barnardos.org.uk to book an appointment.

Sedgley Community Centre Drop-in sessions (just turn up):

Sedgley Community Hub, Bishops Road, Prestwich, M25 0HT

28th Feb - 1pm – 4pm and 18th April - 9am – 12pm

Vision and Hearing Impairment/Deaf

Education Service



The service works closely with local NHS teams and charities to ensure that we are up to speed with what is available to our Children & Young People, and their Families. We have compiled a small directory of links, offering additional support, tips and advice:

Vision	Hearing
<u>Welcome to the Royal Society for Blind Children</u> (rsbc.org.uk)	<u>Audiology :: Northern Care Alliance</u>
<u>Children, Young People & Families - Henshaws</u>	<u>Manchester Deaf Centre - Children and Young People's Service</u>
<u>Support & Donations – UK Charity for Visually Impaired Young People</u> (look-uk.org)	<u>National Deaf Children's Society Supporting deaf children</u> (ndcs.org.uk)
<u>Blind in Business Young Students & Parents - Blind in Business</u>	<u>Parents & Professionals CODA UK & Ireland CIC</u> (codaukireland.co.uk) Working with Children of Deaf Adults (CODA)
<u>Money and benefits - disability living allowance RNIB RNIB</u>	<u>CICS Cochlear Implanted Children's Support Group</u> (cicsgroup.org.uk)
<u>Marvin Story Time Show</u> (positiveeye.co.uk) Marvin's Story Time Show is an inclusive opportunity for the whole family to participate in a meaningful fun story time. Central to the concept are children with special needs.	<u>Help and support for deaf young people How you can get involved</u> (ndcs.org.uk)
	<u>Applying for DLA DLA for deaf children</u> (ndcs.org.uk)
	<u>Grants for the Deaf :: Birkdale Trust for Hearing Impaired</u>
<u>BURY2GETHER a forum for Parents/Carers who have children with SEND</u> Local support for Parents/Carers who have a child or young person with a Special Educational Need or Disability (SEND), aged 0-25, who access Bury services. barclayslifeskills.com (for skills, knowledge and confidence that CYP need for work with tools, tips and learning resources)	

Lesley Woods

Manager, Vision & Hearing/Deaf Education Service

L.A.Woods@bury.gov.uk

The logo for mediatelegal, with 'mediate' in blue and 'legal' in green, set against a white background with a green border. The background of the entire page features a repeating pattern of legal terms in a light green font.

We are contracted by Bury Council to provide an impartial Mediation & Disagreement Resolution Service for parents and young people within Bury. More information is available on our website.

Our contact details are:-

Website	https://mediatelegal.co.uk/send-mediation-disagreement-resolution-services/
Email	help@mediatelegal.co.uk
phone	0161 960 0894

Mediatelegal is accredited by the Civil Mediation Council to provide mediation services, including SEND mediation. Our mediators are Civil Mediation Council SEND Accredited.

What is Mediation?

In a typical SEND dispute, it is often the case that everybody involved simply wants the best outcomes for the child or young person with SEND. Any disagreement often occurs when people can't agree on what provision is needed to ensure that best outcome is achieved. Mediation is a voluntary, confidential and without prejudice process. It allows the parties to come together and speak openly and honestly about their concerns and aspirations in a SEND disagreement.

Mediation is an informal and non-confrontational meeting that gives the parent(s) / young person the opportunity to speak with the local authority (LA) about EHC decisions if they disagree with them. Everything discussed at a mediation is confidential and without prejudice. This means that everybody involved can speak openly and honestly with one another, knowing that nothing they say can later be used against them.

Our SEND mediators make sure that everyone at the meditation has the same opportunities to speak and be heard.

You can find out more about SEND mediation [here](#).

What is Disagreement Resolution?

As well as a Mediation service, every LA must also provide access to a DRS for parents, carers and young people who have concerns about support, and how it is being provided. DRS is entirely voluntary for both parents/young persons/carers and also the LA. DRS is available to be requested for disputes involving children / young persons with SEN, and it doesn't matter whether that child or young person has an EHCP or not.

Mediation differs from DRS because Mediation is intended to be available to use each time a final decision has been made in respect of certain aspects of an EHCP. DRS can be used at any time if both sides agree to use it, including after an appeal has been lodged with the First Tier Tribunal. DRS is an early chance for all parties to discuss any concerns about support, regardless of whether there is an EHC Plan or not.

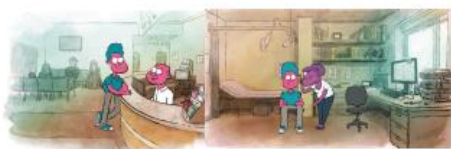
You can find out more about DRS on our [website](#). Our fees are paid by the Local Authority, as required by law. There is no fee payable to us by the parent or young person.

Did you know that every person in Bury aged 14+ with a learning disability is entitled to an annual health check at their GP Practice? An annual health check can help you to stay well by talking to a doctor or nurse about your health and finding any problems early, so they can be managed and treated early.

If you have not had an annual health check recently or you are worried about seeing a doctor or there is anything they can do to help you attend your appointment, please let your GP practice know, these changes are called 'reasonable adjustments.'



Annual Health Checks



Easy
Read



What is an Annual Health Check?



Annual Health Checks are for people with a learning disability.



An Annual Health Check is done by your doctor once a year.



It is there to help you stay healthy.



You can get an Annual Health Check if you are aged 14 or older



Most people with a learning disability can get an Annual Health Check



Why is it good to have an Annual Health Check?



You can talk to your doctor about anything you are worried about.



You can get to know your doctor better



You can get ideas about how to be more healthy



If there is anything wrong then the doctor can sort it out before it gets worse

What happens at your Annual Health Check



A doctor or nurse from your surgery may:



- Check things about your body, like your heart and blood pressure.



- Ask about any medicines you are taking



- Ask about the food you eat



- Check your blood and your wee



- Ask about how you are feeling

Top Tips for your Annual Health Check



You can bring someone with you if you like.



Ask the doctor to explain anything you do not understand



Tell the doctor how you really feel, it will help them to help you.



Take your time.



You can say no if there is a part of the health check you do not want to do



Remember, your doctor is there to help you, so you do not need to feel worried.

Health Action Plans



Ask your doctor to give you a health action plan at your Annual Health Check.



A health action plan is written by you and your doctor.



Your health action plan tells you the things you need to do to keep healthy.



Like getting enough sleep or talking to someone when you feel worried.



It says how you will get the support you need with your health.



Like how your doctor can make sure your appointments are easy to understand.



SPECTRUM GAMING

Spectrum Gaming is an online community for autistic young people aged 8-17 which runs two Discord servers and a Minecraft server. These are overseen by youth workers, trained volunteers and young staff who host regular online events (chosen by our community) and support members to connect socially and form positive relationships.

Our charity is based in Bury and we also run meetups across the Greater Manchester area. Regular activities include youth club, football and monthly forest school sessions, with additional events taking place during school holidays.



In addition to running online and in-person events, Spectrum Gaming is recognised widely for its advocacy projects and training. We are proud to represent the views of autistic young people in Greater Manchester, and beyond, at a strategic level.

Membership to our community is free and Spectrum Gaming is currently accepting new applications for autistic young people residing in the Greater Manchester area. Interested families can find out more and apply online at: www.spectrumgaming.net

You can get in touch with us at: info@spectrumgaming.net

Upcoming Training

Monotropism and autistic wellbeing (ONLINE)

Date: *Wed 21st February*

Time: *7pm-8.30pm*

Suitable for parents/carers and professionals.

More information/tickets can be found at: [**Monotropism**](#)

Resources

Spectrum Gaming has created a variety of resources free for access/use by families and professionals.

Autism Understood: A website about autism created specifically for autistic young people: autismunderstood.co.uk/

Barriers to Education project resources

<https://www.barrierstoeducation.co.uk/trauma>

<https://www.barrierstoeducation.co.uk/anxiety>

<https://www.barrierstoeducation.co.uk/talking-about-autism>

Epic Autism Resources Padlet:

[**Autism padlet**](#)

Visit our [Youtube](#) channel to see content created by our community members

Follow us on [Facebook](#) to find out more





CARE & CONVO

Supporting Parents/Carers who have a Child/Young Person with a Special Educational Need and/or a Disability (SEND), aged 0-25, who access Bury services.

Are you a Parent/Carer?

Fancy a brew and an offload to other parent/carers? We are here to listen. (Children/Young People welcome). Bury SENDiass will be attending to support/advise parents. Next date: Thurs 29th February 7.00pm - 8.00pm

During this session, our parent/carer wellbeing library will be open! This is the opportunity for our members to borrow wellbeing resources and equipment to use at home.

Our printing station will be set up. The sensory room will be open and parent/carers can help themselves to 'invisible disability' lanyards.

Please let us know you are coming by booking your place at the email address below: BURY2GETHER@gmail.com www.bury2gether.co.uk

The Bury SEND Hub (Home of BURY2GETHER) Westminster Avenue Radcliffe Greater Manchester M26 3WD

[f](https://www.facebook.com/bury2gether) [i](https://www.instagram.com/bury2gether) [t](https://www.tiktok.com/@bury2gether) @BURY2GETHER

SEND FOOTBALL TEAMS



WHERE?

CASTLE LEISURE CENTRE



WHEN?

EVERY MONDAY
JUNIORS 4.30-5.15
SENIORS 5.15-6.00

AGES
11-16
16-25

£20 PER TERM

TO SIGN UP, EMAIL:
S.STIRLING@BURY.GOV.UK



BEE INCLUSIVE'S

February Half-Term

HOLIDAY ACTIVITIES



Emily's Mini Farm

Come to the Bury SEND Hub to meet and handle some small animals from Emily's Mini Farm. 3 Sessions available for Primary/Secondary aged children, Early Years children & children with complex care needs.



Jump Xtreme & That Fun Place

Two- hours session at the trampoline park and play centre for children primary and secondary school aged who have SEND.



Adrenaline Centre - Climbing Wall Grip 'n' Go

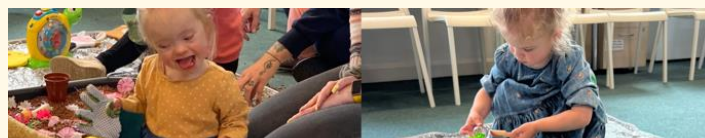
One hour session indoors climbing various walls. This session is suitable for primary and secondary aged children. This session is not suitable for those with physical disabilities



These are subsidised tickets for SEND and siblings. All our activities are Bee Inclusive exclusive events.



FOR FULL DETAILS, ELIGIBILITY AND TO BOOK VISIT
[HTTPS://BOOKWHEN.COM/BEEINCLUSIVE?TAGS=SCHOOLHOLIDAYS](https://bookwhen.com/beeinclusive?tags=schoolholidays)



SEND Early Years (age 0-5) Sessions
2 hour Stay & Play



UPCOMING SESSIONS:

Wednesday 28th February
Time: 11.00am - 1.00pm

Registration opens on 8th February 11am



Bee Inclusive is hosting the above Early Years sessions for children with Special Educational Needs and Disabilities (SEND) aged 0-5 years and their parent/carers. The sessions will be filled with lots of fun and educational activities.

These sessions are facilitated by Kelly Judd (Senior Portage Worker) and Laura Trevor (SEND Health Visitor) with support from other professionals and volunteers who will be available for advice and support. Refreshments will be available, and the Sensory Room and sensory courtyard will be open for use. A parent/carer must stay and supervise their child at all times.

To be considered for a place, you must meet the following criteria:

- Is your child 0-5 years old?
- Does your child live in (or access) services in Bury?
- Do any of the following apply? 1) Does your child have a diagnosis of SEND? 2) Do you or professionals suspect that your child has SEND? 3) Is your child on the pathway for a SEND diagnosis?

Please note: In order to allocate places on these sessions, professionals will prioritise children who are not in an early years setting, who are not currently accessing early years services, children who cannot access generic early help sessions, and those who haven't attended our sessions before.



Visit www.bookwhen.co.uk/beeinclusive to request a place at these sessions. You will be contacted by Bee Inclusive if your family have been allocated a place.



BURY SEND HUB
Westminster Avenue
Radcliffe M26 3WD



[bee_inclusive](https://www.facebook.com/bee_inclusive)
[@beeinclusiveuk](https://www.facebook.com/beeinclusiveuk)

Bee Inclusive CIC is a 'not-for-profit', Community Interest Company - 12164262. We provide social opportunities for children and young people with SEND, (Special Educational Needs and Disabilities).



WHAT'S ON AT THE BURY SEND HUB

TUE 6 FEB
12:00 PM - 2:00 PM

SEND LEARNING EVENT AT THE BURY SEND HUB. AN OPEN DAY TO COME ALONG AND FIND OUT MORE ABOUT BURY2GETHER AND BEE INCLUSIVE. TO BOOK EMAIL: BURY2GETHER@GMAIL.COM

WED 7 FEB
10:00 AM - 11:30 AM

SENDIASS WORKSHOP FOR PARENT/CARERS: REVIEWING AN EHCP. BOOKING ESSENTIAL AT: [HTTPS://WWW.EVENTBRITE.CO.UK/E/BURY-SENDIASS-SEN-SUPPORT-WORKSHOP-TICKETS-685490910767?AFF=EBDSSBDESTSEARCH](https://www.eventbrite.co.uk/e/bury-sendiass-sen-support-workshop-tickets-685490910767?aff=EBDSSBDESTSEARCH)

WED 7 FEB
4:30 PM - 5:30 PM

HAPPY SIGNS CHOIR: A SINGING AND SIGNING CHOIR FOR PEOPLE WITH SEND AND THEIR FAMILIES. FOR MORE INFORMATION/TO BOOK PLEASE CONTACT EMMA: HAPPYPYSIGNSCIC@YAHOO.COM

WED 14 FEB
10:00 AM - 12:00 PM

SENDIASS WORKSHOP FOR PARENT/CARERS: SEN SUPPORT AND REASONABLE ADJUSTMENTS. BOOKING ESSENTIAL AT: [HTTPS://WWW.EVENTBRITE.CO.UK/E/BURY-SENDIASS-SEN-SUPPORT-WORKSHOP-TICKETS-685490910767?AFF=EBDSSBDESTSEARCH](https://www.eventbrite.co.uk/e/bury-sendiass-sen-support-workshop-tickets-685490910767?aff=EBDSSBDESTSEARCH)

WED 14 FEB
4:30 PM - 5:30 PM

HAPPY SIGNS CHOIR: A SINGING AND SIGNING CHOIR FOR PEOPLE WITH SEND AND THEIR FAMILIES. FOR MORE INFORMATION/TO BOOK PLEASE CONTACT EMMA: HAPPYPYSIGNSCIC@YAHOO.COM

TUE 20 FEB
10:00 AM - 4:00 PM

HAIRCUTS AT THE SEND HUB. BOOK A SLOT AT: WWW.BOOKWHEN.COM/BEEINCLUSIVE

WED 21 FEB
10:00 AM - 3:00 PM

EMILY'S MINI FARM. SESSIONS FOR SEND CHILDREN, PETTING AND HANDLING SMALL ANIMALS. TO BOOK, VISIT BOOKWHEN.COM/BEEINCLUSIVE

WED 28 FEB
11:00 AM - 1:00 PM

SEND EARLY YEARS (0-5 YEARS) STAY & PLAY/CARE & CONVO WITH SEND HEALTH VISITOR AND SENIOR PORTAGE WORKER. BOOKING ESSENTIAL AT BOOKWHEN.COM/BEEINCLUSIVE

WED 28 FEB
4:30 PM - 5:30 PM

HAPPY SIGNS CHOIR: A SINGING AND SIGNING CHOIR FOR PEOPLE WITH SEND AND THEIR FAMILIES. FOR MORE INFORMATION/TO BOOK PLEASE CONTACT EMMA: HAPPYPYSIGNSCIC@YAHOO.COM

THU 29 FEB
7:00 PM - 8:00 PM

BURY2GETHER CARE AND CONVO. OPEN TO ALL PARENT/CARERS. CHILDREN ARE WELCOME TO ATTEND. BOOKING ESSENTIAL: BURY2GETHER@GMAIL.COM

BEE INCLUSIVE PARTIES

EXCLUSIVE USE OF OUR VENUE FOR TWO HOURS FOR 15-20 CHILDREN INCLUDING ACCESS TO THE COURTYARD, PLAYGROUND AND SENSORY ROOM. FULL ACCESS TO OUR KITCHEN. PARTY INVITES AND ACCESSORIES AVAILABLE TOO.

VISIT WWW.BEEINCLUSIVE.CO.UK FOR FURTHER DETAILS.

OR TO BOOK A PARTY, EMAIL US AT BOOKBEEINCLUSIVE@GMAIL.COM.

BEE INCLUSIVE SENSORY ROOM

AVAILABLE FOR HIRE TO BURY SEND FAMILIES AND ORGANISATIONS. TO BOOK A SESSION, VISIT WWW.BOOKWHEN.COM/BEEINCLUSIVE OR VISIT WWW.BEEINCLUSIVE.CO.UK/SENSORY-ROOM FOR FURTHER DETAILS



BURY2GETHER WELLBEING LIBRARY

A RANGE OF BOOKS AND WELLBEING EQUIPMENT FOR HIRE. BOOK BY APPOINTMENT BY EMAIL TO BURY2GETHER@GMAIL.COM

WWW.BURY2GETHER.COM

WWW.BEEINCLUSIVE.CO.UK





Oak LP
Outreach

What a busy start to the term it has been. OakLP Outreach has launched the website [Overview | Oak Learning Partnership Outreach \(oaklp.co.uk\)](https://oaklp.co.uk) whereby all training opportunities, useful documents, testimonials can be found. This month we have been busy supporting schools and students within the Local Authority and beyond to ensure that the universal provision for SEND is offered to learners.

Harriet Lyno our specialist teacher ran some Dyslexia Training at St Bernadettes and St Michaels Primary School and received some excellent feedback, if you are interested in developing your knowledge of specialist teacher of dyslexia then please do get in contact. As part of our CPD offer we also ran a Signalong course for a number of Primary and Secondary practitioners. Watch out for the Autumn courses, available now on the website.



Newsletter

Spring Term – 'One For All'



SENCO Support – Coffee and a Catch Up

Focus – SEND Support

Venue - Elms Bank School, Whitefield

Support from OakLP Outreach, Nicola Pemberton and LA representatives, Cath Atherden and Sian O Brian

18th January 2024, 3:30-4:30pm, Elms Bank School

SENCO Solution Meeting

9:30-13:00

Thursday 29th February 2024

Venue – Elms Bank College Hub, Prestwich

Agenda

Transition
Preparing students with SEND for transition to year 7, Transition from ~~primary~~ to adult services' social care. Supporting students with social workers for transition

There opportunity to talk with primary and secondary SENCOs to discuss cases

Support Surgery

Venue – Elms Bank School

Support from OakLP Outreach, Elms Bank School, Virtual School, Educational Psychology Service, LA Outreach and CAMHS

Venue - Elms Bank School 9:15-12:15

1st February and 14th March 2024

8th February and 21st March 2024



TA Developmental Drop In

Venue - Elms Bank School/College/Unsworth Primary RP* *Please specify when you book*

8:30am – 12:15pm

2nd February
9th February

Inclusion is at the heart of our trust



Autism Education Trust

Schools



Good Autism Practice

Gain practical knowledge, and discover hands-on Tools and techniques to support autistic children in your setting.

Who is this training for?

This is a module for practitioners who work directly with autistic children in schools, and it provides guidance on processes and tools that can help practitioners to implement good autism practice.

What will you learn?

- Develop your knowledge and understanding of good autism practice
- Reflect on and improve your practice in working with autistic pupils
- Understand strategies and approaches you can draw upon for autistic pupils you work with
- Reflect on the kind of information you need to collect for creating a person-centred education plan
- Consider how to involve the autistic pupil and their family in setting learning goals

4 ½
hour



Developed by leading autism specialists



Up to date with the latest research



Enhances your CPD



Free resources and frameworks linked to Ofsted



Optional certification

Hub Name **OakLP Outreach**

Date **16th April 2024 or 23rd April 2024**

Time **10:00-14:30**

Details
Come and join us at Elms Bank College to further develop your understanding of autism.

All training materials will be available to you upon completion of the training.



Oak LP
Outreach

Cost
£50
per person

Book your training now:

Email us at outreach@oaklp.co.uk or www.outreach.oaklp.co.uk
Call us on 0161 553 0030

Supported by:
 Department for Education



For more information and free resources visit:
www.austismeducationtrust.org.uk