

# ACTION DAYS UPDATE 2025



## INTRODUCTION

## Bury Council Housing Services

Following the success of the Estate Action Days in 2024, a further programme of events was delivered in 2025. These events gave residents the opportunity to clear waste from their homes and gardens, with additional support available for anyone unable to move items to the skips themselves. Alongside waste removal, teams also litter picked streets and green spaces, tidied up communal planters, provided a visible presence across the estates, and engaged with tenants to address enquiries, concerns, and promote both housing services and wider council support.

To encourage family participation, children's activities were included at events held during the school holidays. Although attendance numbers from wider council staff was lower than the previous year, it was encouraging to see staff from other departments volunteering and contributing to the community effort.

The Housing Team and Tenant Groups identified estates where an Action Day would have the greatest impact and help bring local communities together. Events were publicised widely through digital channels and door to door flyers to ensure strong awareness across each neighbourhood.

This report summarises the outcomes of the Action Days and highlights additional clean up and gardening events that have taken place.



Report produced by Bury Housing's Tenant Engagement Team - February 26

## TOWNSIDE ACTION DAY - MARCH

### OVERVIEW

Townside estate is located close to the town centre of Bury with approx. 100 properties, consisting of mainly ground floor and first floor flats, bungalows and a few houses.

The estate has had some bad press in the past, nicknamed Legoland due to the pre-fabricated built blocks. The estate is quite isolated as it is situated in a dip, with secluded alleyways and raised walkways. The East Lancs Railway runs along one side of the estate.

Main issues in the area include regular fly tipping, particularly at the communal bin area, contaminated bins, untidy communal areas, drug taking and drug dealing.

Townside Action Group have regular meetings with Housing staff to address any issues. They also litterpick the area on a weekly basis. There was a great turn out from local tenants to improve the communal garden areas on Heyside Way, with help from our Community Grant Fund to purchase plants.



### OUTCOMES

Amount of rubbish disposed in skip: **1.7 tonne**

Amount of rubbish disposed by the cage: **0.3 tonne, plus 3 fridges and 3 tyres**

Number of staff attended: **25 (Housing staff, Rents team, Fire Service, Waste Management, Street Cleaning, Volunteering Development Officer)**

We engaged with **33** tenants and residents to discuss local issues.

**11** satisfaction surveys completed by tenants, via door knocking.

The Fire Service conducted **5** Safe and Well visits.

A team of **8** tenant volunteers from Townside Action Group tidied up the communal garden areas on Heyside Way and planted them up. What a transformation! They have since continued with the environmental improvements on the estate.

Emptied contaminated bins, cut back shrubs, swept walkways/communal areas.

Street cleaning team attended the day after the event to clean the streets.

***“Thank you for cutting my tree back, I can now see out of my window.”***

***“The street sweepers came out at 8am this morning and have done a lovely job, must say above and beyond the call! Thank you so much for all your help, it’s a different place.”***

## POLEFIELD ESTATE ACTION DAY - APRIL

### OVERVIEW

Polefield estate is a large family estate consisting of mainly 3 bedroom family housing. The main issues are litter, fly tipping, youth nuisance, parking problems.

At a recent walkabout, feedback had been given by residents that they would like more presence on the estate to engage with younger people. So this event was held in the Easter School holidays so we could engage with young people by organising Easter craft activities, Easter egg hunt and kids litterpick with a chocolate reward as a thank you, and to encourage them to keep their neighbourhood tidy.

### OUTCOMES

Amount of rubbish disposed in skips: **3.96 tonnes**

Amount of rubbish disposed by cage: **1.5 tonnes**

Number of staff/volunteers attended: **27 (Housing, local councillors, Greater Manchester Police, Staying Well Team)**

We engaged with over **30** children via the activity tent and Easter Egg Hunt and their parents, tenants and residents.

Number of tenants engaged with: **30**

**7** satisfaction surveys completed by tenants, via door knocking and in the trailer.

***“It’s great the Council are putting on these sorts of days, its putting money into making the estate and homes better.”***

***Child – “Thank You for today, I’ve had a lovely time. When are you coming again?”***

***Cllr Ryder “It was great to take part in today’s Polefield Action Day, seeing the kids discovering the Easter Eggs being the best bit!”***



## ABBAY CLOSE AREA ACTION DAY - MAY

### OVERVIEW

The Abbey Close area of Radcliffe consists of mainly flats, communal blocks and some houses. There are communal bin stores located across the estate which attract persistent fly tipping, vermin and litter. Other issues include general aesthetics of the estate, broken windows/doors, pot holes, poor street lighting, anti social behaviour, drug use, overgrown trees/shrubs, poor fencing, leaking roofs and guttering causing damp on walls. Growing Together Radcliffe Centre was opened to use for a comfort and refreshment break for staff and volunteers.



### OUTCOMES

Amount of rubbish disposed in 2 large skips: **2.38 tonnes**

Amount of rubbish disposed by the cage: **1.86 tonnes** plus 10 mattresses, 5 televisions and 3 fridge freezers

Van full of scrap metal was collected.

Swept up and tidied communal bin store.

Engaged with around **60** tenants and residents.

Number of staff/groups attended: **26** (Housing, Live Well, GGI Contractor, Councillor, Waste Management, Incredible Edible Radcliffe)

Reported local issues: **15** repairs, emptied or removed **8** contaminated bins.

**2** satisfaction surveys completed by tenants.

**4** residents, Incredible Edible volunteer and Housing / GGI staff tidied up an overgrown communal planter and planted up a herb garden on Ampleforth Gardens.



**“Great to see so much staff making the estate look better.”**

Another tenant who helped planting said: **“Thanks so much, I’ve really enjoyed getting involved and the event has really made a difference to making the estate look tidier.”**

## TOP O'TH' FIELDS ACTION DAY - JUNE

### OVERVIEW

Top o'th Fields estate is made up of the Independent Living Scheme, Welcomb Walk, Needham Court, Frankton Rd, Fountain Place, Higher Lane flats. The main issues for this area are fly tipping at the communal bin stores, anti social behaviour at night time, poor lighting and parking. There is an active residents group (Top o'th Fields and Welcomb Walk TRA) who work closely with housing staff, local Councillors and Police and host regular community meetings and estate walkabouts to address any community issues.

### OUTCOMES

Amount of rubbish disposed by the **Needham Court skip – 1.66 tonne**

Amount of rubbish disposed by the **Fountain Place skip – 1.42 tonne**

Amount of rubbish disposed by the cage: **0.5 tonne**

**The Potters Gardening group (4 volunteers)** led a Gardening activity for residents to participate in making small hanging baskets to take away, to make the estate look brighter.

Estate was litter picked and tidied up by staff and volunteers

**17** vulnerable tenants were supported with moving furniture/disposing of items by staff into skips

**13** enquiries from residents reported directly to staff to resolve

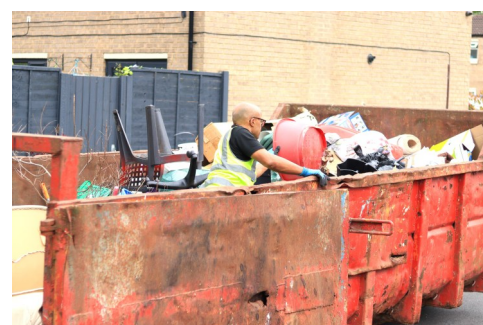
**17** satisfaction surveys completed

**3** health and social care students volunteered as part of their placement hours

**25** members of staff helped out at the event.

***“Thank you for helping move my sofa out and disposing of it. This has allowed me more room in my flat to safely move around and saved me money I didn’t have to spend.”***

***Flowers gifted to Naomi, Tenant Engagement Officer, on behalf of residents to expressed their thanks.***



## TOPPING FOLD ESTATE ACTION DAY - JULY

### OVERVIEW

Topping Fold Estate in Bury is a community of around 250 homes made up of two and three bed properties and one bed flats. The estate is also home to a well used community centre, which acts as a central hub for residents. It hosts a youth club, provides a warm and welcoming space, and offers food parcels to support local families. The main issues on the estate are drug related crime, anti social behaviour, fly tipping, litter and food poverty, with a high number of tenants on welfare benefits.

### OUTCOMES

Amount of rubbish disposed in 3 skips: **6.95 tonnes**

Amount of rubbish disposed by the cage: **4.3 tonnes**

Around **24** staff and partners attended including Housing, GM Police, Bury Adult Learning, Live Well Service, Council staff. Early Years, Health Watch, Staying Well Team.

Completed **3** Tenant Satisfaction Surveys.

**25** engaged tenants via door knock.

The event was really busy, great community spirit with residents helping each other.

**20** young people attended the event to take part in litterpicking, planting and craft activities.

Main issues reported were the green spaces on the area with Community Payback revisiting within the weeks to come. Adult Learning to attend to discuss further educational needs to support residents. Local children thoroughly enjoyed litter picking and planting activities. They wanted more rubbish to collect! Children asked to do a litter pick every day.

***“Many thanks for arranging todays community clean up. It was great to see so many tenants out and about engaging with the Council services showing their pride in the neighbourhood.”***



## PERCY ST & MASSEY ST ACTION DAY - SEPTEMBER

### OVERVIEW

The Percy Street and Massey Street area in Bury is made up of predominately 1 & 2 bed flats, with major concerns of fly-tipping in the gardens and on open communal land.

The Action Day highlighted several other ongoing issues in the area, including contaminated bins, and large amounts of rubbish left in gardens. These concerns will help us shape our next steps as we continue working with residents to improve the estate and tackle environmental problems together.



### OUTCOMES

Amount of rubbish disposed in 1 skip: **1.36 tonnes**

Amount of rubbish disposed by the cage: **1.8 tonnes**

Around **22** staff and partners attended including Housing, Live Well Service, Health Watch, Staying Well Team and a Wheeldons member of staff helped out at the event as part of their Social Value contribution, plus donated gift vouchers for our Christmas competition prizes.



Completed **5** Tenant Satisfaction Surveys.

**15** engaged tenants via door knock.

The event was really busy, great community spirit with residents helping each other.

Main issues reported were fly-tipping in communal areas, back streets, residents gardens with lots of rubbish which needed disposing of, contaminated bins, which had not been collected.

***“Good to see a presence in the area. The area looks so much better!” / “Thank you, you are doing a great job!”***



## WHITEFIELD RD AREA ACTION DAY - OCTOBER

### OVERVIEW

As part of our ongoing work to address anti social behaviour (ASB) across our neighbourhoods, we delivered a targeted Estate Action Day on Whitefield Road in Bury, an area with many tenants with complex issues and a history of persistent ASB concerns.

This initiative was organised at the request of Greater Manchester Police, who identified the location as a priority area and asked us to coordinate a community Action Day to support their presence and engagement on the day. By combining environmental improvements with visible partnership working, the event aimed to reduce ASB, improve perceptions of safety, and strengthen relationships with residents.

### OUTCOMES

Amount of rubbish disposed in 1 Skip **1.2 tonnes**

Amount of rubbish disposed by the cage: **1.5 tonnes**

Around **20** staff and partners attended including Housing Staff, GM Police and Waste Management.

Completed **2** Tenant Satisfaction Surveys.

**12** engaged tenants via door knock.

**7** vulnerable tenants were supported with moving unwanted items.

The event brought tenants out of their properties and gave them the opportunity to engage with staff for any advice or support needs.

*“Its good to see a presence in the area.”*

*“The area looks so much better!”*



## OTHER COMMUNITY ACTION DAYS DURING 2025

### TAYLOR HOUSE GARDENING EVENT

Staff from Bury Housing Services and residents from Taylor House joined forces to plant up pots, hanging baskets and put up bird boxes, to create a welcoming outdoor space for everyone to enjoy. With support from our Community Grant Fund, residents purchased flowers and pots, and a donated planter has helped brighten the entrance. A big thank you to all the volunteers for their hard work. Since the project began, tenants have become more involved to help develop social activities and improve the communal areas. They now help maintain the garden and have purchased a pool table and received a donation from a local councillor, to encourage more social time together.



### RED BANK GARDEN TIDY EVENT

Volunteers, tenants and Housing staff came together to transform the large rear communal garden at the Red Bank Extra Care Scheme. Rotten benches, an old summerhouse, tyres and a broken greenhouse were cleared thanks to the strong turnout. Caretakers continued the effort with weedkilling and jet washing across communal areas.



Red Bank tenant Tina Horn shared her appreciation: ***“I would like to thank Bury Council Housing Services for arranging our Garden Tidy day. Thank you to all the housing staff, Radcliffe Rotary, Little Britain Anglers, Radcliffe First, family of Red Bank, Incredible Edible Radcliffe, Radcliffe Litterpickers and Growing Together Radcliffe. You were all amazing and the teamwork was fantastic. You have given Red Bank a fresh start in their garden.”***



## OTHER COMMUNITY ACTION DAYS DURING 2025

### GRIFFIN HOUSE GARDEN CLEARANCE

In August, tenants and staff at Griffin House joined forces with local services for a garden clearance morning that brought new energy to the extra care scheme. The group worked together to clear away the grounds, plant up a variety of shrubs and flowers, freshen up borders, transforming the communal garden into a bright, more welcoming space. This encouraged tenants to get involved, helping to build a sense of ownership, pride and community spirit within the scheme.



### FALCON HOUSE GARDEN MAKEOVER

Following the success of the Griffin House garden project, we moved into Phase 2 at Falcon House in October, focusing on structural planting to prepare the garden for Spring. Staff and tenants joined in, and their involvement clearly supported the tenants' wellbeing. The sense of shared purpose and enthusiasm was genuinely lovely to see.



### CLARKSHILL GREEN SPACE IMPROVEMENTS

Clarkshill Gardening Club meets weekly to improve the grounds at their scheme, with all work fundraised by the Action Group. They have cleared and prepared land, built a fenced area and plans continue to develop a safe walkway and planted areas.

### SEEDFIELD ESTATE CLEAN-UP DAY

Seedfield TRA held their Annual Clean-up Day in November, supported by Bury Housing. The group litterpicked the area and assistance was given to vulnerable tenants/residents to dispose items in the skip. The TRA's commitment, organisation, and hands on involvement has been fantastic throughout the year, and their contribution has played a vital role in maintaining a safer, cleaner, and more supported environment for our community.



## SUMMARY

### OUTCOMES

Held **7** Estate Action Days plus **6** environmental improvement events.

The aims of the Action Days were to:

- Work closely with partners, tenants and volunteers
- Improve the look and feel of neighbourhoods
- Support tenants and gather feedback
- Build strong, connected communities
- Promote recycling and better waste habits
- Improve safety and security
- Enhance the overall appearance of estate

### At-a-Glance Impact



**Waste & Environmental Impact**

**30.89 tonnes**

of rubbish collected and disposed of  
(not including separated scrap metal)



**Staff & Partner Involvement**

**169**

staff and partners supported  
the events



**Tenant Engagement**

**207**

tenants engaged



**Tenant Voice**

**47**

Tenant Satisfaction Surveys completed



**Youth Engagement**

**50**

young people took part in activities  
and conversations