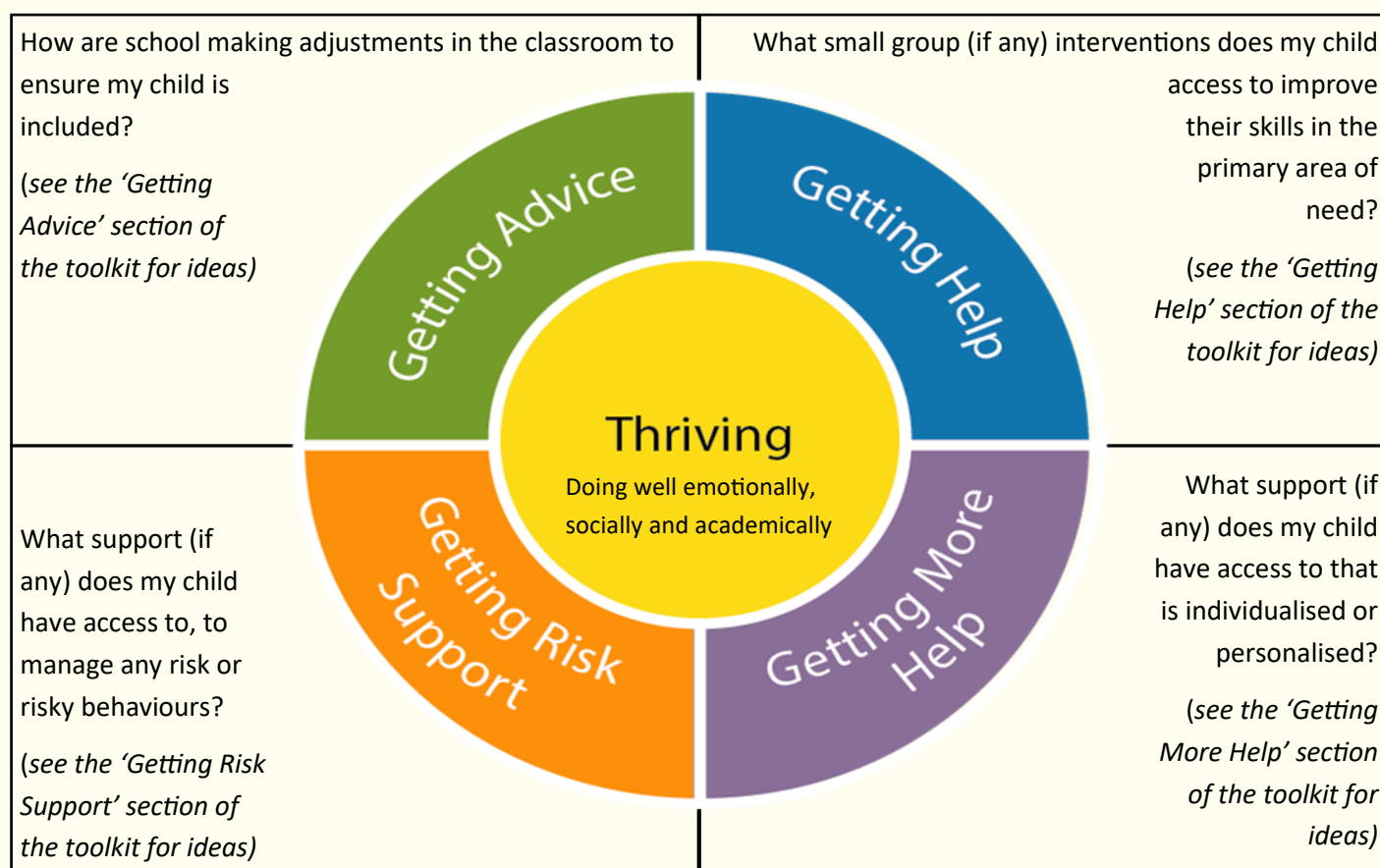


Questions parents and carers can use to support SEND conversations with SENCOs

Bury's **SEND Graduated Approach Toolkit** has been produced to support children and young people with Special Educational Needs and Disabilities (SEND) in Bury. There is a parent and carer section of the Graduated Approach Toolkit, which has been developed with and specifically for parents and carers.

The following questions may be useful to help you to explore how your child's needs are being met in their nursery, school or college, in relation to the different sections of the toolkit.

- Is my child on the SEND list? How was this decided?
- What area of need is identified as the primary concern for my child?
 - Cognition and Learning
 - Communication and Interaction
 - Social, Emotional and Mental Health
 - Physical and Sensory
- Which section do you see my child's support needs falling in? (see below)



- How confident are you that this provision is meeting my child's needs? (Explore assessment data on progress, attendance, exclusions and outcomes from interventions).
- How can we work well together to review plans and ensure needs are met? (see *SENCO Best Practice* section of the toolkit)
- How can we communicate with each other in a way that is most effective?
- What can I do at home to support my child's progress alongside what is happening in school?