

# Community Commissioning Team Message to the Market and Commissioning Intentions





# Older People and Ageing Well

## Commissioning Intentions

- We will review existing Care at Home services in 2024.
- Subject to the outcomes of the Care at Home Review, we will formally competitively tender for Care at Home services in 2024/2025
- Priorities include an increased number of Extra Care Housing schemes will be built. Plans are in place for 5 new build Extra Care schemes over the next 4-5 years to offer improved housing options and choice to customers.
- We will enhance the Reablement offer to include improved step up/step down support for older people.



# Messages for the Market

We will:

- Strengthen the voice of older people in Bury through the Bury Older People Network commissioned via the Bury VCFA.
- Commission all our services in line with Bury's strengths- based approach
- Support people to maintain their independence and live well at home for as long as possible.
- Ensure we have efficient and responsive services delivered by an experienced and skilled workforce that can adapt as people's needs change.
- Continue to support the vibrancy and stability of the care market to ensure that we have a sustainable supply of good quality care options across the borough.
- Maximise the use of digital technology to support improved outcomes for people to increase independence.



# Older People & Ageing Well Contracts - Bury Council only

Service	Provider	Contract start date	Contract end date
Bury Older People's Co-Production Network	Bury VCFA	10 August 2021	9 August 2024
Care at Home Framework	Various	25 October 2021	24 October 2024

Note: GM ICB Bury Locality also has several contracts



# Adults - Learning Disabilities & Autism

## Commissioning Intentions

- Outcome from our “Together Towards Independence” programme 24/5 mean we will identify gaps in the market and work with Providers to focus on strengths-based approaches, encouraging people to be more independent.
- A new Supported Living framework will be formally tendered in Q4 2024/2025
- We will formally competitively procure all existing supported living provision via the new framework once established to align with outcome measures and expectations over the next 2 years
- Priorities include local provision for those with complex needs and step up/step down support for young adults in crisis.
- We will explore and consider pilots for the development and introduction of Individual Service Funds in Bury



# Messages for the Market

We will:

- Commission all our services in line with Bury's strengths- based approach
- Work with Providers (across all settings) to ensure that people are as independent as possible, using a progression model of support.
- Take a positive approach to risk management, supporting Providers to offer enabling models of support
- Ensure residential care is only reserved for people whose needs cannot be met in other settings or where this is the most appropriate
- Support people to get into work and to learn skills to equip them for this, by working with employers, Providers, and organisations across the system to increase training, volunteering, and work opportunities.
- Promote an increased use of Assistive Technology to increase independence



# Learning Disability & Autism contracts

Service Development	Provider	Contract start date	Contract end date
Residential Care	Various	various	To confirm
Supported living accommodation	Various	various	open
Supported living accommodation	St Mary's Place	August 24 tbc	August 30
Development of co-production network (adults with LD)	Bury People First	17 Nov 22	18 October 24

All contracts will be re-tenders after contract end date, unless specifically stated otherwise.



# Adults - Mental Health

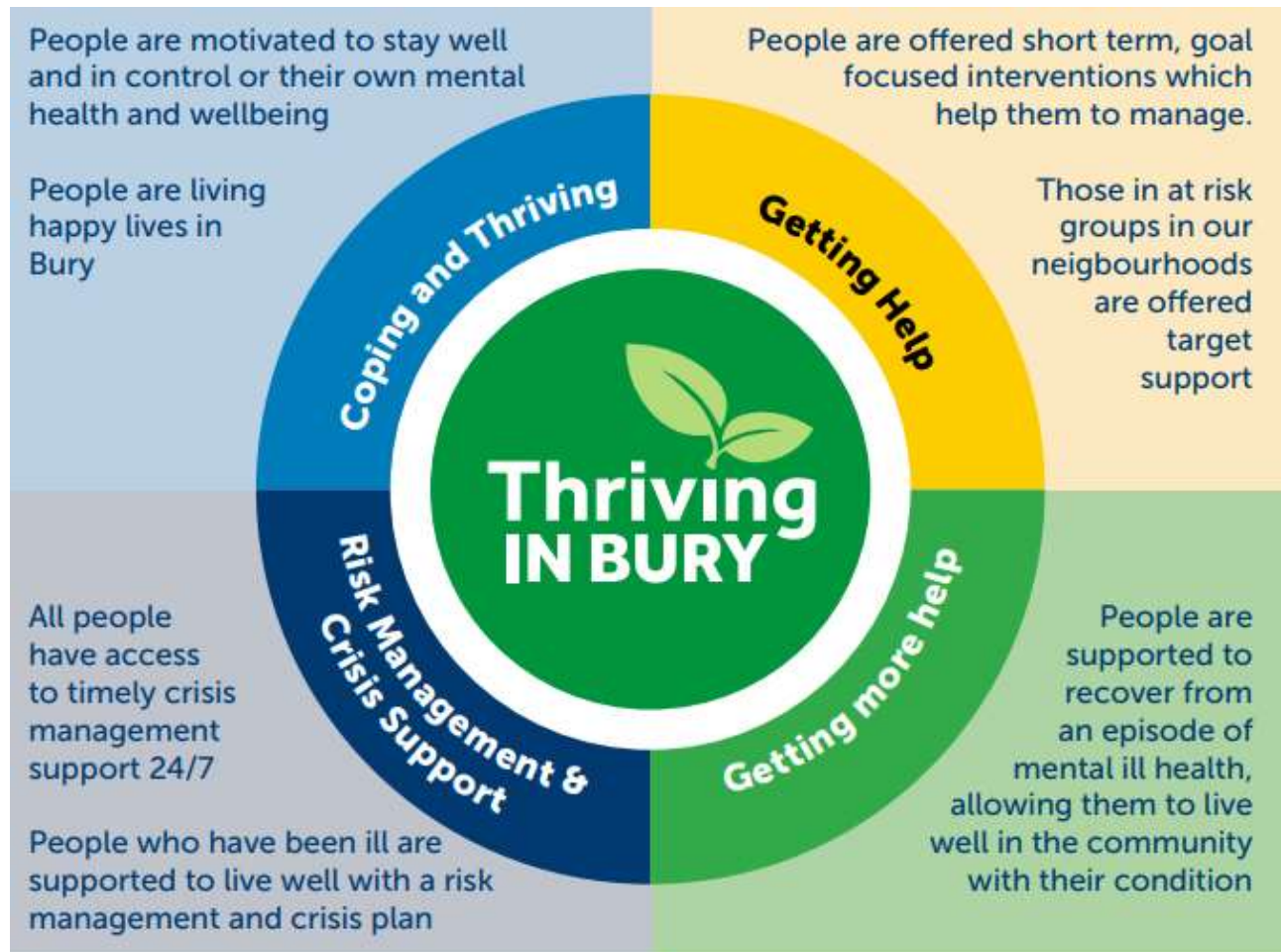
## Commissioning Intentions

We will:

- Increase the capacity of in Borough mental health supported living accommodation, including step down and 24/7 schemes, by maximising existing provisions and developing new schemes.
- Continue to work with existing providers, ensuring existing provision is fit for purpose, meeting both current and future needs. This may mean reshaping, expanding or decommissioning where necessary.
- Reduce out of area placements by working with providers and housing associations on service development.
- Explore potential models with health partners in relation to crisis beds / hospital avoidance provision.



# Adults - Mental Health



Bury mental health partners from both the NHS and Voluntary, Community and Faith (VCF) sectors have been working together to achieve the Thriving in Bury framework since 2020.

It is an all-age approach that incorporates the Thrive principles for adults, children and young people, it was co-produced with partners and people with lived experience.

# Mental Health Contracts

Service	Provider	Contract start date	Contract end date
Advocacy (IMHA, IMCA, Care Act, Complaints)	N-Compass	1 January 2024	31 December 2024
Supported living accommodation	Northern Healthcare: Blackburn St	June 2024	June 2027
Supported living accommodation	Northern Healthcare: The Rock	September 2024	September 2027
Lived Experience Partner	Collaborate Outloud	February 2023	July 2024

All contracts will be re-tenders after contract end date, unless specifically stated otherwise.

## Other contracts – Carers, housing support etc

Service	Provider	Contract start date	Contract end date
Carers service for over 18's	N-Compass	1 June 20	31 May 25
Early Intervention & Rehabilitation Service for Adults with Loss of Vision & Visual Impairment	Bury Society for Blind and Partially Sighted People	1 April 22	31 March 25
Provision of Neighbourhood Support for Young People	Great Places Housing Association	1 April 20	31 March 25
Provision of Neighbourhood Support- Housing Services Bury Gateway	Calico Homes	1 April 19	30 Sept 24
Provision of Neighbourhood Support Housing Services Bury Bridges	Adullam Homes Housing Association	1 April 19	30 Sept 24

All contracts will be re-tenders after contract end date, unless specifically stated otherwise.



# Provider Workforce Development

- We will carry out a competitive tender for a Workforce Development Support Partner in Quarter 4 2024.
- They will support providers with:
  - Recruitment and retention of permanent staff
  - Run Bury Flex; the bank of staff that can be accessed by providers flexible to avoid use of agency
  - Work alongside Providers to develop Leadership and Development training including for Aspiring managers; supporting succession planning.
- Adult Social Care Workforce Strategy will be published in Quarter 3 2024/25