
BURY EARLY YEARS SPEECH LANGUAGE AND COMMUNICATION PATHWAY GUIDANCE

Guidance : Last updated January 2024



What is the Early Years Speech language and Communication Pathway?

- The pathway is a multi-agency approach to supporting speech, language, and communication (SLC) for early years children in Bury.
- It is a supportive resource that is available to guide any professional working with children 0-5, or any parent/carer of a child aged 0-5.
- The pathway will help children gain access to the support they need when they need it.
- It also contains a range of preventative and early intervention approaches to support early language and communication development.

Why has the pathway been developed?

Quote: *"The first years of life are vital in giving every child the best start, with speech, language, and communication skills an important indicator of child wellbeing. These skills shape a child's ability to learn, develop friendships and their future life chances."* Best start in speech, language, and communication: Guidance to support local commissioners and service leads-October 2020 (PHE)

- ✓ To intervene early and help children to be more prepared and ready for school, particularly those from socially disadvantaged families.
- ✓ To ensure that Bury children have the best start in life.
- ✓ To support and empower the early years workforce with their key role in joint working with other professionals in Bury to help close the word gap.
- ✓ To reduce some of the demand on specialist services.

✓ To coordinate the expertise of services across Bury supporting children and families with SLC needs.
The pathway is separated into 3 key areas of support: Universal Offer, Targeted Offer, and the Specialist Offer. Children can be supported in more than one area at a time.

Bury Early Years Speech, Language and Communication Universal Offer – This section of the pathway details the support, guidance and resources that are available for every child in Bury. This includes services from:

Midwifery Team

Bolton Midwifery Team- Postcode cover-BL8/BL0/M26

North Manchester Midwifery Team-Postcode cover-BL9/M45/M25. The team provide evidence-based information on how to support babies' general development. Including talking to your bump.

Health Visitor Team

The Universal Programme consists of the following key contacts and health and development reviews:

New birth visit. This visit is usually between 10-21 days old. Takes place at home.

6-8-week. This also takes place at home.

8-12 months.

2-2 years 6 months.

The Ages and Stages Questionnaires (ASQ3/ASQSE) are used by Health Visitor Teams during these contacts to assess a child's development. This is to ensure they are developing as expected and is part of the Healthy Child Programme. Communication and Language advice and support is entwined within the universal core

offer. Information from BBC Tiny Happy People, GM 10 Tips for Talking and other advice via Essential Parent resource, is all used and shared consistently at this level.

Parents will be invited to complete an ages and stages questionnaire (ASQ/ASQSE) via the GM Early Years app prior to the appointment. This gives parents the opportunity to inform the team what the child can already do at home.

Between 4-5 years children transfer to School Nursing Team (This is usually before they start school in Reception).

Audiology Team

If a child is born in hospital a newborn hearing test may be offered before the baby is discharged. Otherwise, it will be carried out by a healthcare professional, healthcare assistant or health visitor within the first few weeks. Ideally the test is done in the first 4 to 5 weeks, but it can be done at up to 3 months of age.

Bury Libraries Team

The library service offers parents and their children, an opportunity to access a range of books, resources and parent and child sessions.

Bury Council Local Authority Team including Family Hubs

Universal/Universal Plus Parent and Child Sessions offered across Bury

Advice and guidance offered for early years providers from the Early Years Locality Advisors.

Early years providers offering 3- and 4-year-old funded places.

Eligible for all children from the term after their 3rd birthday. All early year's providers including schools, nurseries, pre-schools and playgroups and home-based educators are expected to meet the requirements and standards of 'The Early Years Foundation Stage-EYFS Statutory Framework,' September 2021. They are all also inspected by Ofsted, to ensure the quality and standards of the early years provision meets the principles and requirements of the EYFS.

Bury Early Years Speech, Language and Communication Universal Digital Support resources

- ✓ **BBC Tiny Happy People:** *The BBC have created this interactive resource, which provides ideas and activities to help promote children's early speech language, and communication development.*
- ✓ **Greater Manchester (GM) 10 Tips for Talking:** *These tips have been collated by a range of professionals across Greater Manchester. They have also been translated into the top 10 spoken languages across GM.*
- ✓ **Universally Speaking:** *This resource has been commissioned by the Communication Trust. It is a series of booklets for anyone who works with children and young people. It helps identify if a child is on the right track with their communication and language development and offers advice and support to help them if they may need any extra support.*

Hungry Little Minds: *This interactive resource has been developed by the HM Government to encourage parents and carers to adopt positive activities and behaviours to boost children's communication language, and literacy development through play.*

Bury Early Years Speech, Language and Communication Targeted Offer - The section of the pathway details what is available for those children who may need additional support to help them make good progress in their Speech, Language and Communication Development

Local Authority Family Hubs

The family hubs across Bury provide families with the integrated support they need to care for their children from conception, throughout the early years, and into the start of adulthood. This is to enable parents to establish a firm foundation for their children, from which to meet their full potential in life. Sessions to support children to be ready for school are run from the hubs and from other areas across the borough. Each hub has a named Communication Champion who can offer additional support with a child's speech, language, and communication development. This may be via a targeted group, or by support via one of the drop-in sessions. Referrals for additional support can be made via any service working with children aged 0-5.

Health Visitor Team

The team provides a targeted approach to individual and family needs. All families are offered the Universal Programme; however, some families may require additional support. An antenatal contact is offered to those expectant parents who may need specific advice or support early on in their parenting journey. This usually takes place at home and provides an opportunity to meet the named Health Visitor.

The team may complete an additional assessment to identify the specific need for support. If the universal health and development review at **2-2 years 6 months** identifies a need for further intervention, they relating to a child's speech, language and communication development, the child will be offered a 'WellComm Screen'. This may be carried out by the Health Visiting Service if the child does not attend an early years'

setting. If the child is attending a setting, the Health Visiting Team will contact the setting and ask for them to complete a WellComm Screen. The team may also refer the child and parent/carer to access a targeted session within the Family Hub, or if needed a referral to the Speech Therapy Team. (see annex A)

Early Years SEND Team

If a child has other additional needs as well as speech, language, and communication, you can follow SEND Pathway (see annex C)

Early Years Setting

The role of the Communication Champion:

- ✓ To oversee the implementation and a consistent approach to WellComm and other programmes to support children's speech, language, and communication development across the school/setting (see ANNEX B)
- ✓ To train and support others team members to keep all up to date re speech language and communication development.
- ✓ To work in partnership with parents and carers, sharing information to support the home learning environment, and sign posting them to other areas of support.
- ✓ Be an advocate for the voice of the child
- ✓ To support fellow practitioners to incorporate appropriate strategies related to speech, language and communication into the planning process.
- ✓ Attend regular communication network meetings, utilising the opportunity to liaise with other multi-agency communication champions and share good practice.

- ✓ Be confident to work and promote the locality pathway by sharing with fellow practitioners/teachers, parents, and other professionals
- ✓ To raise awareness of SLC for practitioners and parents sharing relevant information and strategies
- ✓ To seek out further training and development opportunities to support own continued CPD with regard to speech, language, and communication.

Bury Paediatric Speech and Language Therapy Team

The Speech and Language Therapy team work with other teams across the pathway to help develop effective targeted level interventions for children in need of additional support with developing their speech, language and communication skills. The team also offers training for professionals across the pathway. The team may give advice to parents and professionals on targeted activities they can complete at home or in the child's education setting.

Bury Early Years Speech, Language and Communication Specialist Offer- This section of the pathway is in place for children who need specialist support in addition to universal and targeted support. This support can be accessed through a referral to the Speech and Language Therapy service.

Bury Paediatric Speech and Language Therapy Team

The Speech and Language Team helps to support children to develop their speech, language and communication skills by working closely with the child's parent/carer and/or educational setting. The service

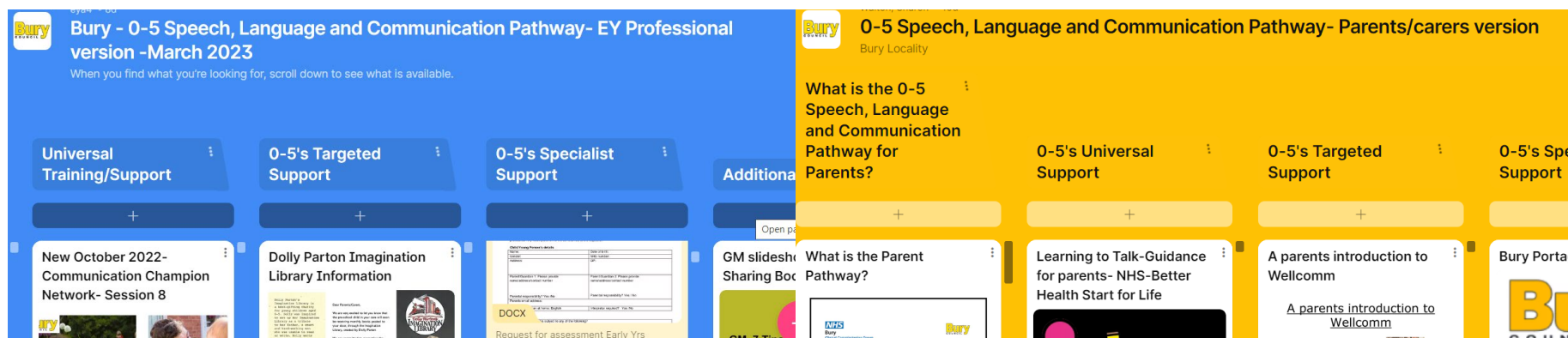
offers specialist information and advice to help give those closest placed to the child the skills and confidence to successfully support their needs.

The Speech and Language Therapy team will complete an assessment based on the areas highlighted in the referral and by the child's parent/carer. Assessments will vary depending on each child's individual needs.

Depending on the outcome of the assessment, there are several possible next steps:

- We may invite parents/carers to attend a workshop to explore different strategies they can use to support their child's communication development.
- We may develop an individualised programme targeting identified areas of need. This programme would be carried out at home by parents/carers and/or in their education setting by an early year's practitioner.
- We may see children in community clinic for specific interventions, for example, if a child has significant difficulties with producing speech sounds.
- We may find that support from Speech and Language Therapy is not required at the current time. The child may be meeting the milestones typically expected for their age, or they may already have the appropriate support in place to meet their needs. In this case, the child would be discharged to targeted or universal services.

Where can you find all the information/tools and resources of the Speech, Language and Communication Pathway?



We have created two padlets that hold information for you to help guide you through the tools and resources of our SLC support pathway.

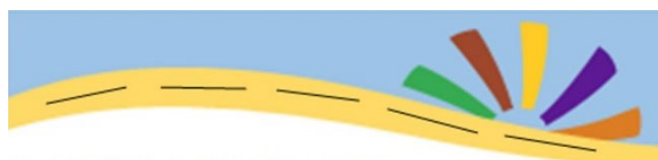
Please see the links below...

[0-5 Speech, Language and Communication Pathway- EY Professional version \(padlet.com\)](#)

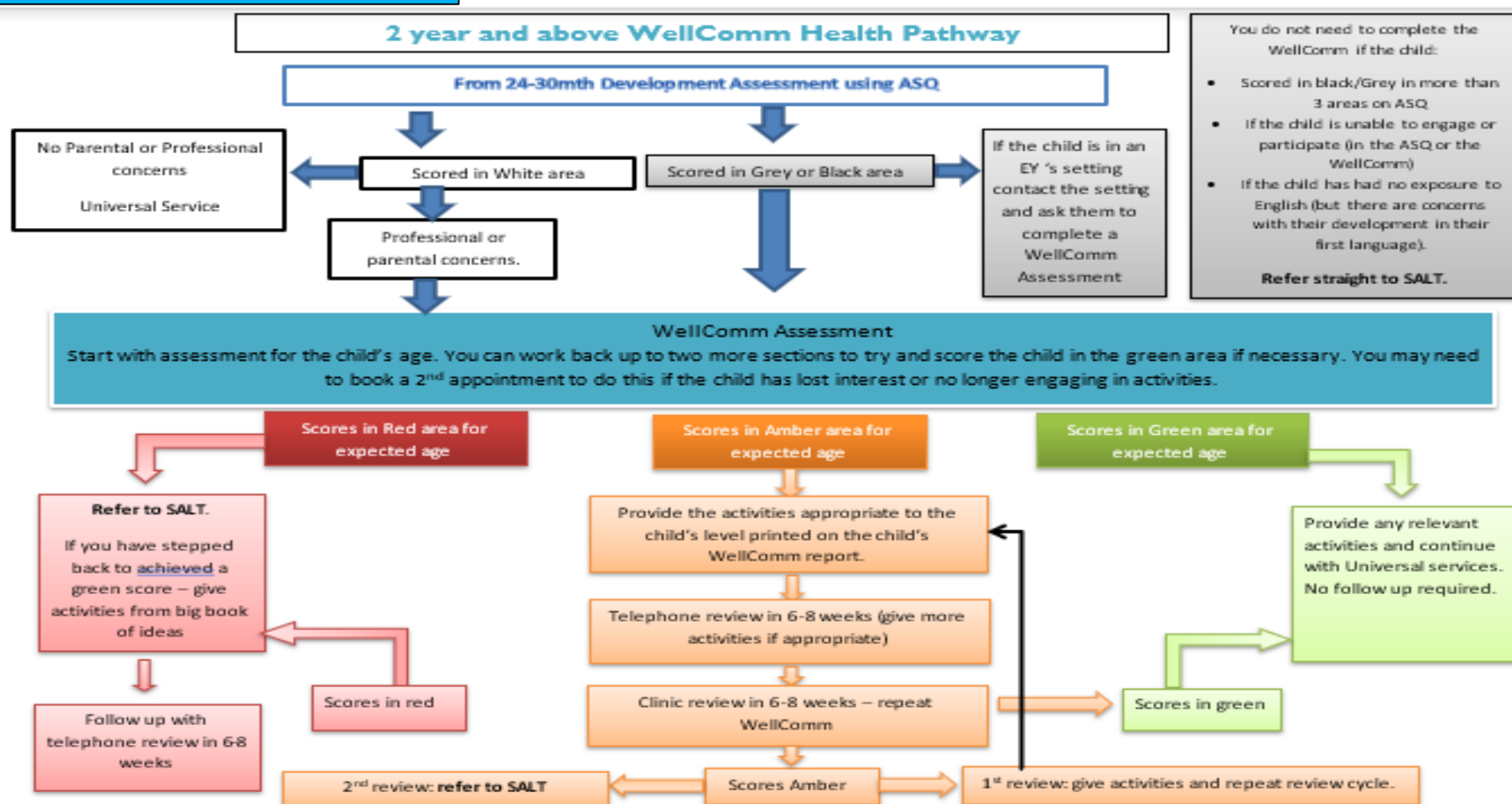
This will support EY Professionals to navigate through the tools and resources of the SLC professional pathway.

[0-5 Speech, Language and Communication Pathway- Parents/carers version \(padlet.com\)](#)

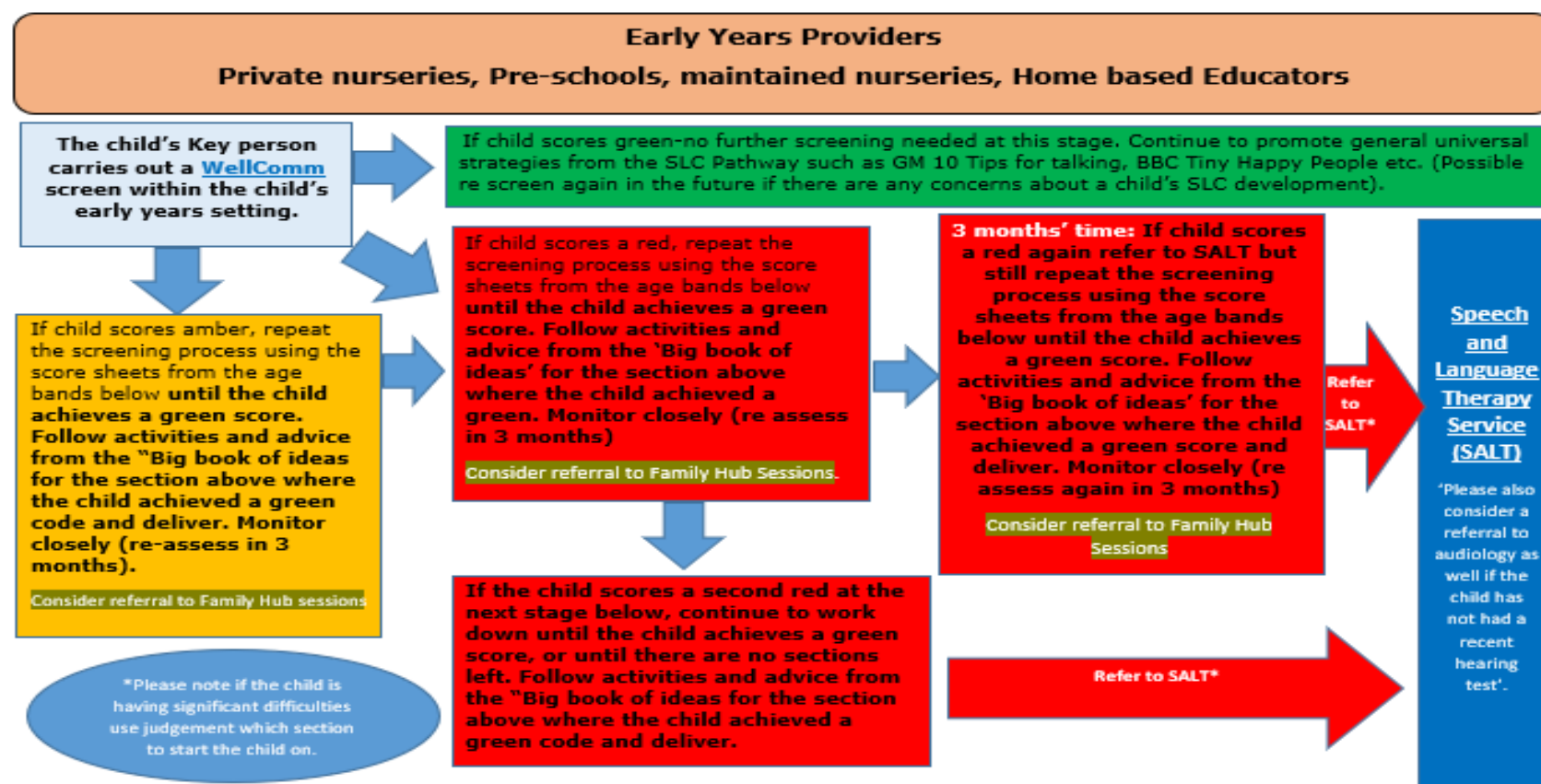
This will support parents to understand the SLC Pathway, and to be able to source information to support their child's SLC development.

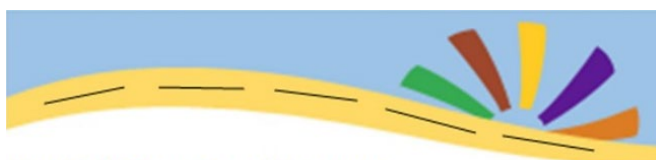


ANNEX A- Health Visitor WellComm Pathway



ANNEX B-Early Years Providers WellComm Pathway





ANNEX C-Early Years SEND Pathway



Early Years SEND Pathway

