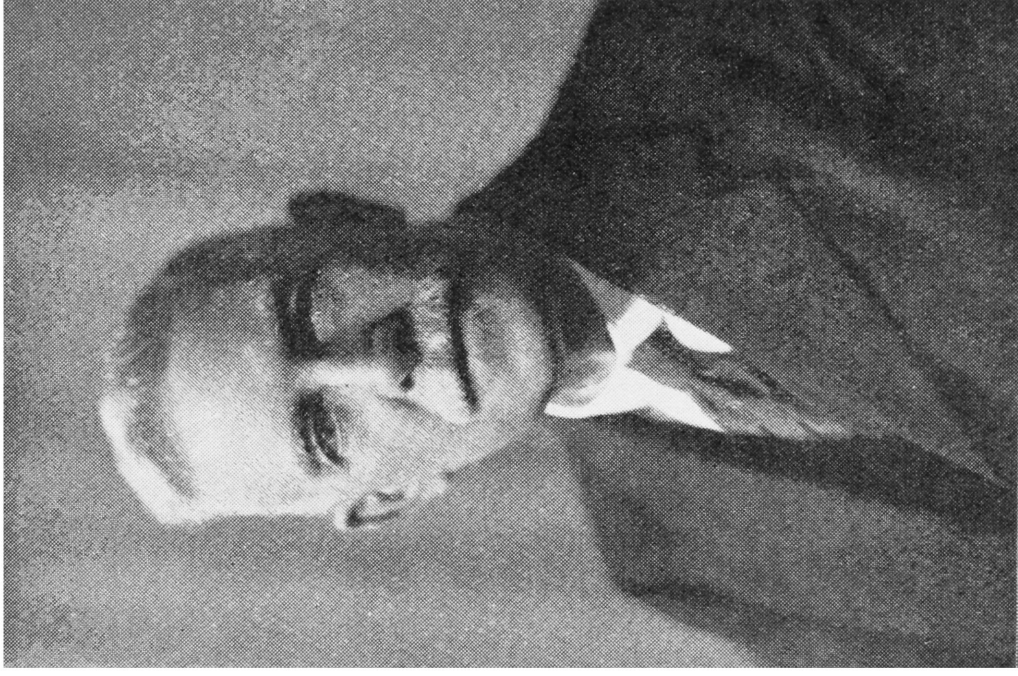




Buckley Photo
Coun. THOMAS BIRCH, J.P.
Mayor.



Coun. ALFRED SCHOFIELD, J.P.
Deputy Mayor.

FOREWORD BY

THE MAYOR OF BURY

(COUN. THOMAS BIRCH)

BURY, which now has a population of 61,000, was created a County Borough in 1876. It is also a Parliamentary Borough, and has its own separate Court of Summary Jurisdiction.

The Corporation, which is generally acknowledged as one of the most active and progressive in Lancashire, owns the Gas and Electricity undertakings, Electric Tramways and Omnibus Services, and maintains a Fire Brigade, Secondary Schools, Technical School, School of Art, Public Abattoirs, Market and Fairground, Turkish, Vapour, and Swimming Baths. The water supply is in the hands of the Irwell Valley Water Board, of which Bury is the largest of the constituent authorities.

The Corporation provides Fire Brigade and Ambulance services to neighbouring authorities, and operates joint transport services in Manchester, Bolton, Rochdale, Salford, Heywood, Rawtenstall, Ramsbottom, Whitefield, Radcliffe, and Tottington. It supplies electricity in bulk to Heywood Corporation, and treats all sewage from Tottington U.D.C.

The electricity works is a "selected station" for the purposes of the Central Electricity Board's Grid Scheme.

A Town Hall at an estimated cost of £160,000 will very shortly be in course of erection.

As Education Authority, the Corporation controls Secondary Schools, Technical College, School of Art, Evening Institutes, a Junior Instruction Centre, and 26 Elementary Schools. Building operations are shortly to be commenced on a new Technical College at an estimated cost of £60,000.

The Sewage Works are being enlarged at an estimated cost of £25,000, and the Cleansing Department is equipped with the most up-to-date machinery and appliances.

Over 2,000 houses have been erected by the Corporation, and a five year programme of slum clearance is proceeding.

An Art Gallery and Public Library, erected at a cost of £37,000, houses a fine collection of oil and water colour paintings, engravings and statuary, presented to the borough in 1899 by the family of the late Mr. Thomas Wrigley, of Timberhurst, Bury.

Bury is the predominant constituent authority in the Bury and District Joint Hospital Board, which owns fever and smallpox hospitals.

Despite all the Council's activities, the rates of the borough are only 10s 10d. in the £. Bury is, therefore, the lowest rated town in Lancashire, a record of which it may be justly proud and one which

FOR

PAPER TUBES

OF ALL DESCRIPTIONS

PAPER TUBES

(BURY) LTD.

Foundry Street

BURY

Phone
583 Bury

Manchester Royal Exchange
Pillar J 3

Our specially-treated . .
Tubes are very strong
and durable and . . .
are made to withstand
rough usage

clearly proves that it is a wisely governed municipality and yet progressive withal.

The chief industries are cotton, paper, wool, tanneries, bleaching, engineering, clothmaking, slippermaking, shirtmaking, hatmaking, felt and dyeing, etc.

ELECTRICITY, GAS AND WATER CHARGES.

ELECTRICITY.

LIGHTING—(a) A flat rate of 4½d. per unit for the first 500 units per quarter. All additional consumption 3d. per unit; or
(b) Rateable value charge of 14% plus following inclusive charges—

First 50 units per quarter	1½d. per unit.
Remainder	½d. per unit.

POWER (motor)—

First 1,000 units per quarter	2½d. per unit.
Next 1,500	„ „	1½d. „
„ 47,500	„ „	1d. „
„ 100,000	„ „8d. „
Remainder6d. „

Special prices quoted for large consumers. All enquiries to the Electrical Engineer, Market Street, Bury.

GAS.

DOMESTIC (Yearly Consumption)—

	Price per 1,000 cu. ft.
The First 60,000 cu. ft.	3s. 1d.
Next 40,000 „	2s. 9d.
„ 150,000 „	2s. 6d.
„ 150,000 „	2s. 3d.
„ 200,000 „	1s. 9d.
„ 150,000 „	1s. 6d.
Remainder	1s. 3d.

TRADE PURPOSES (Yearly Consumption)—

400,000 cu. ft. and not exceeding 600,000 cu. ft.	1s. 9d.
600,000 „ „ 750,000 „	1s. 6d.
Exceeding 750,000 cu. ft.	1s. 3d.

All enquiries to the Gas Engineer, Gas Works, Elton, Bury.

WATER.

DOMESTIC—

According to rateable value.

TRADE—

From 2s. 0d. per 1,000 gallons to £87 10s. 0d. per 1,000,000 gallons.

All enquiries to the Engineer and Manager, The Irwell Valley Water Board, Parsons Lane, Bury.



Let us carry your surplus!

Joshua Hartley & Co.

(Proprietors—W. & J. HARTLEY)

MACHINERY & METAL
MERCHANTS
AND MILL FURNISHERS

ENGINES, BOILERS, MACHINERY
AND PLANT OF ALL DESCRIPTIONS
BOUGHT FOR CASH

Croft Street & Fountain Street, BURY

TELEPHONE 445

BURY

BURY is a Municipal, Parliamentary, and County Borough, situated in the South-East of Lancashire. It is 9 miles to the North of Manchester, 35 East of Liverpool, and 198 North-West of London. Rochdale lies $6\frac{1}{2}$ miles to the East, and Bolton $5\frac{1}{2}$ miles to the West. To the North, Blackburn and Burnley are about 18 miles away. The ecclesiastical Parish of Bury, which is now divided into numerous local government areas, was anciently very extensive, and included the townships of Bury, Elton, Heap, Tottington-Higher-End and Tottington-Lower-End, Musbury, Coupe Lench and parts of Elton, Tottington-Lower-End and Walmersley-cum - Shuttleworth. Walmersley - cum - Shuttleworth remains in the Borough. The climate is humid, and there is an average rainfall of from 40 to 45 inches per annum. The mean elevation is over 300 feet above sea level ; and the highest point in the Borough is 765 feet, at Higher Sedger Hey, in the township of Walmersley-cum-Shuttleworth.

Lord Derby is Lord of the Manor and Patron of the living of the Parish Church. The patronage of most of the churches in the Town is vested wholly or partly with the Rector of Bury (the Rev. H. L. Hornby).