

Fishpool and Pimhole

£5.7m Bee Active Travel Scheme

Phase 2 improvement works

Starting autumn 2025

Ending winter 2026



More road safety improvement works are about to start in your neighbourhood

- Works will take place for about 12 months
- As part of the Bee Network the scheme is funded by UK Government's City Region Sustainable Transport Settlement and the Mayor's Challenge
- Please see inside for more information



BEE NETWORK



Transport for
Greater Manchester

Bury
Council

About the Bee Active Travel Scheme

The scheme has been designed together with the community, to provide the best quality active travel scheme for residents.

What the scheme will provide

- Upgraded traffic junctions
- New and improved crossing points
- Continuous footways
- Traffic calming measures
- Low-traffic zones in selected streets

What the scheme will achieve

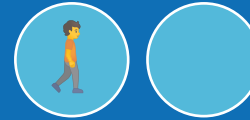
The scheme will improve connectivity to Bury town centre and other local facilities, making it easier for people to walk, wheel or cycle for local journeys.

This will help people to choose healthier, greener ways to travel.

What to expect

As with all works carried out on the highway, you can expect some temporary unavoidable disruption while works are in progress, such as:

Alternative
pedestrian routes
and crossings



Temporary
traffic lights due to
lane closures



Diversion routes
due to essential
road closures



- Advance warning signs will be installed before works start at each site
- All diversion routes will be clearly signed
- After the works you can expect to be able to get around and reach the town centre more easily



Example of a modal filter



Example of a puffin crossing

Where can I find out more about the phase 2 programme of works for Fishpool and Pimhole Active Travel scheme?

The phase 2 scheme is split into 12 individual projects, each focussed on specific roads and streets within the Fishpool and Pimhole areas. More detailed information is at our website.

SCAN THE QR CODE

or visit: bury.gov.uk/fishpool-pimhole-phase2



How to contact us

Email: engcon@bury.gov.uk

Want to get involved in shaping local transport across Bury and Greater Manchester?

Visit: bury.gov.uk/beenetwork-forum



BEE NETWORK



Transport for
Greater Manchester

Bury
Council