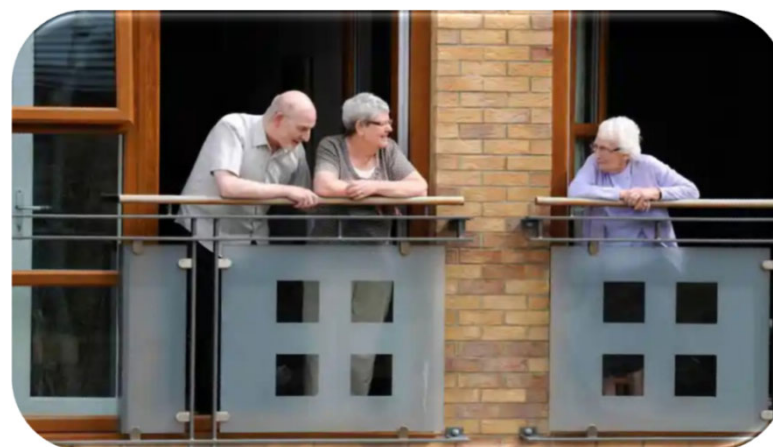


Community Commissioning Team Message to the Market and Commissioning Intentions





Older People and Ageing Well

Commissioning Intentions

- We will formally competitively tender for Care at Home services in 2025.
- We will award new Care at Home contracts to successful providers to commence October 2025.
- We will increase the number of Extra Care Housing schemes. Plans are in place for 5 new build Extra Care schemes over the next 10 years to offer improved housing options and choice to customers.
- We will enhance the Reablement offer to include improved step up/step down support for older people.



Messages for the Market

We will:

- Strengthen the voice of older people in Bury through the Bury Older People Network commissioned via the Bury VCFA.
- Commission all our services in line with Bury's strengths- based approach
- Support people to maintain their independence and live well at home for as long as possible.
- Ensure we have efficient and responsive services delivered by an experienced and skilled workforce that can adapt to people's changing needs.
- Continue to support the vibrancy and stability of the care market to ensure that we have a sustainable supply of good quality care options across the borough.
- Maximise the use of digital technology to support improved outcomes for people to increase independence.



Older People & Ageing Well Contracts - Bury Council only

Service	Provider	Contract start date	Contract end date
Bury Older People's Co-Production Network	Bury VCFA	10 August 2021	9 August 2026
Care at Home Framework	Various	25 October 2021	24 October 2025

Note: GM ICB Bury Locality also has several contracts



Adults - Learning Disabilities & Autism

Commissioning Intentions

- We will formally competitively procure all existing supported living provision in 25/26
- Following the success of our "Together Towards Independence" project, we will work with all Providers to focus on strengths-based approaches, encouraging people to be more independent.
- We will work with Providers on the development of outcomes based KPIs and contracts
- We will deliver access to an LD & A Provider workforce support offer for strengths-based training, positive behaviour support etc during Q2 25/26
- Gaps in the market include support for very complex people, and also young adults 16-18, preparing for adulthood – we are keen to build capacity and skills in these areas.
- We will continue to develop housing options around our "own front door" model, to achieve our housing targets – currently on track.



Messages for the Market

We will:

- Commission all our services to be as local as possible
- Work with Providers (across all settings) to ensure that people are as independent as possible, using a 'progression' model of support.
- Take a positive approach to risk management, supporting Providers to offer enabling models
- Ensure residential care is only reserved for people whose needs cannot be met in other settings or where this is the most appropriate
- Support people to get into work and to learn skills to equip them for this, by working with employers, Providers, and organisations across the system to increase training, volunteering, and work opportunities.
- Promote an increased use of Assistive Technology to increase independence



Learning Disability & Autism contracts

Service Development	Provider	Contract start date	Contract end date
Residential Care	Various	various	To confirm
Supported living accommodation	Various Providers, all with open contract end dates. We will formally retender all existing contracts during 25/26		
Supported living accommodation	St Mary's Place	August 24	August 30

All contracts will be re-tenders after contract end date, unless specifically stated otherwise.

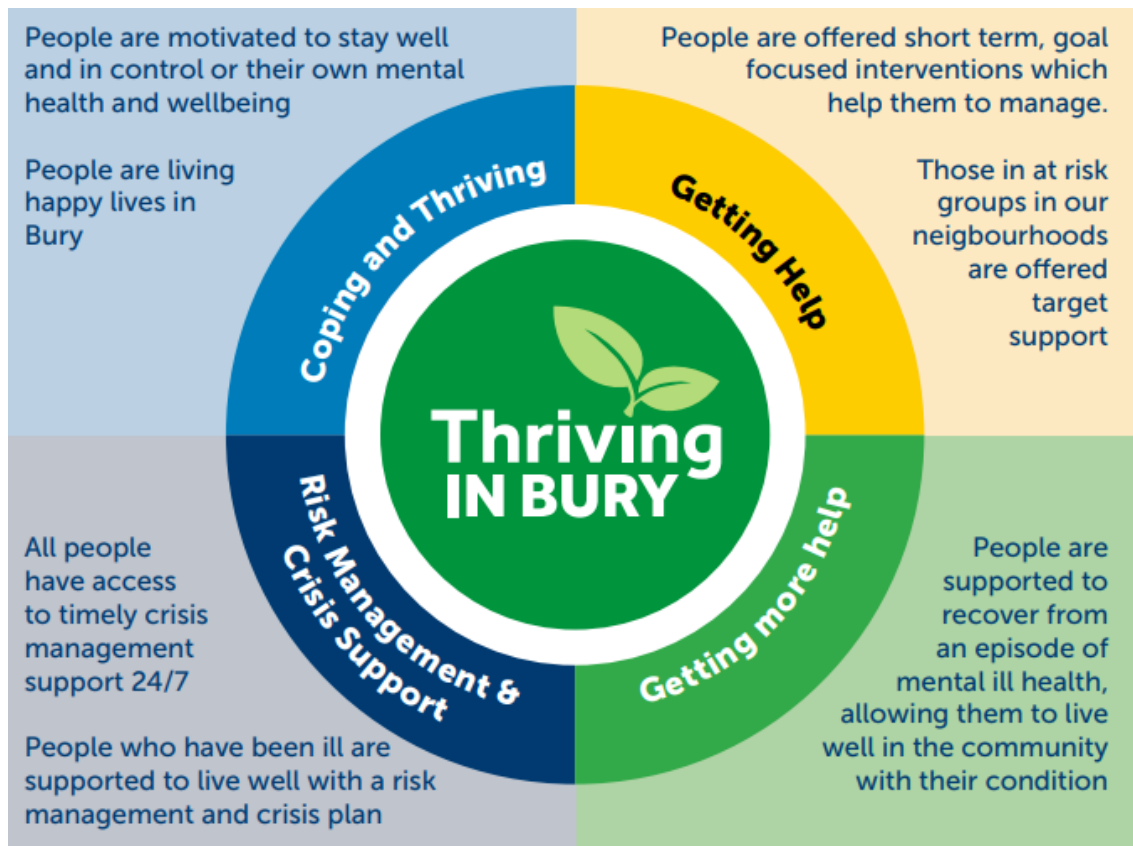
Adults - Mental Health

Commissioning Intentions

We will:

- Increase the capacity of in Borough mental health supported living accommodation, including step down and 24/7 schemes, by maximising existing provisions and developing new schemes.
- Continue to work with existing providers, ensuring existing provision is fit for purpose, meeting both current and future needs. This may mean reshaping, expanding or decommissioning where necessary.
- Reduce out of area placements by working with providers and housing associations on service development.
- Explore potential models with health partners in relation to crisis beds / hospital avoidance provision.

Adults - Mental Health



Bury mental health partners from both the NHS and Voluntary, Community and Faith (VCF) sectors have been working together to achieve the Thriving in Bury framework since 2020.

It is an all-age approach that incorporates the Thrive principles for adults, children and young people, it was co-produced with partners and people with lived experience.

Mental Health Contracts

Service	Provider	Contract start date	Contract end date
Advocacy (IMHA, IMCA, Care Act, Complaints)	N-Compass	1 January 2025	31 December 2025
Supported living accommodation	Northern Healthcare: Liberty House, Blackburn St	1 July 2024	31 June 2027
Supported living accommodation	Northern Healthcare: Saxon House, The Rock	17 March 2025	16 March 2028
Lived Experience Partner	Collaborate Outloud	1 July 2024	30 June 2026
Living Well VCSE	Bury Involvement Group and Creative Living Centre	1 July 2024	30 June 2026

All contracts will be re-tenders after contract end date, unless specifically stated otherwise.

Other contracts – Carers, housing support etc

Service	Provider	Contract start date	Contract end date
Carers service for over 18's	N-Compass	1 June 25	31 May 29
Early Intervention & Rehabilitation Service for Adults with Loss of Vision & Visual Impairment	Bury Society for Blind and Partially Sighted People	1 April 25	31 March 28
Provision of Neighbourhood Support for Young People	Great Places Housing Association	1 April 20	30 Sept 25
Provision of Neighbourhood Support-Housing Services Bury Gateway	Calico Homes	1 October 25	30 Sept 28
Provision of Neighbourhood Support Housing Services Bury Bridges	Adullam Homes Housing Association	1 April 25	30 Sept 28

All contracts will be re-tenders after contract end date, unless specifically stated otherwise.



Provider Workforce Development

- We will commission an enhanced Provider Workforce Support offer in in Q2 2025.
- This will support providers in areas including:
 - Recruitment and retention of permanent staff
 - Run Bury Flex; the bank of staff that can be accessed by providers flexible to avoid use of agency
 - Work alongside Providers to develop Leadership and Development training including for Aspiring managers; supporting succession planning.
- Adult Social Care Workforce Strategy will be published in Quarter 1 2025