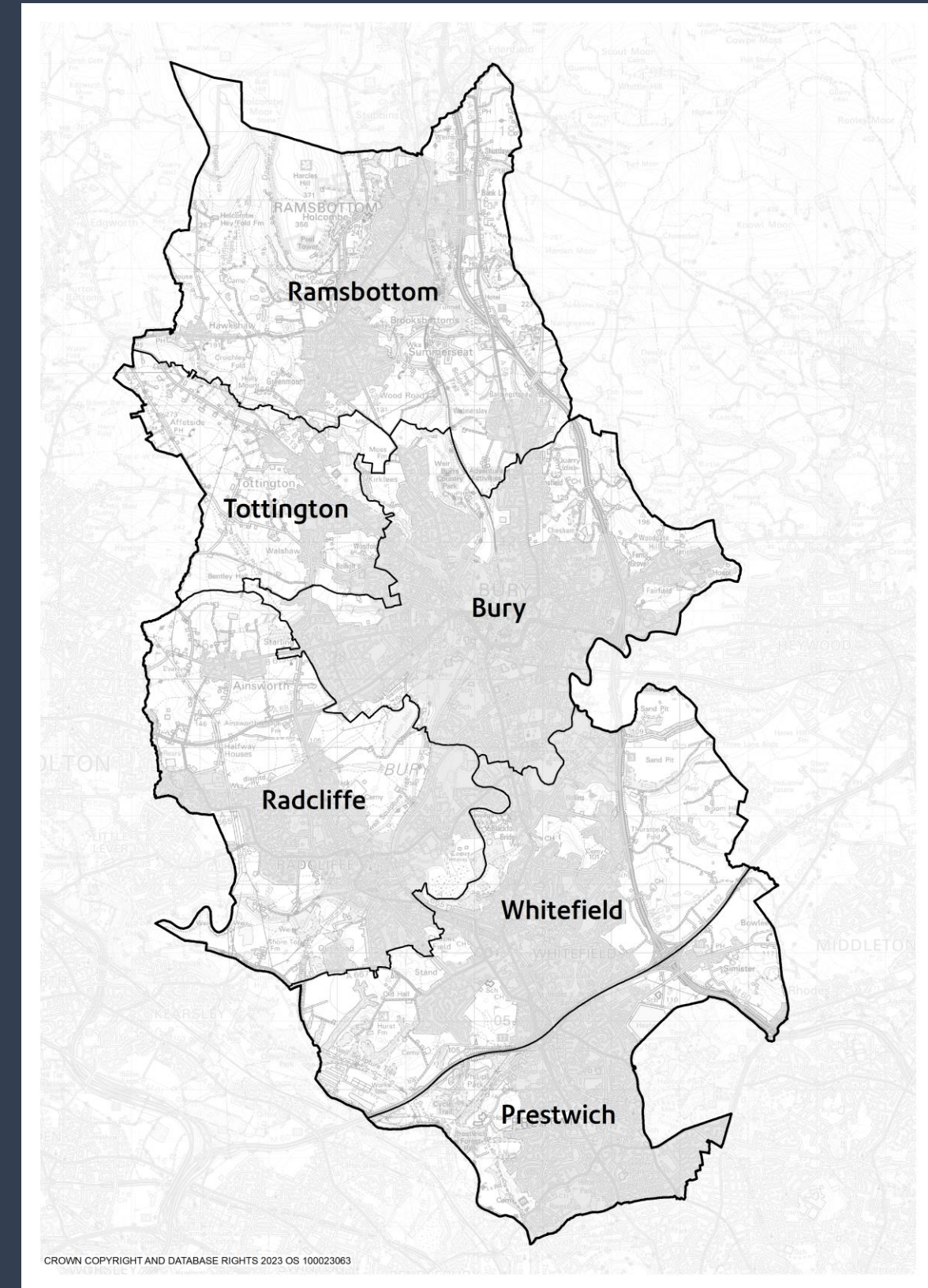
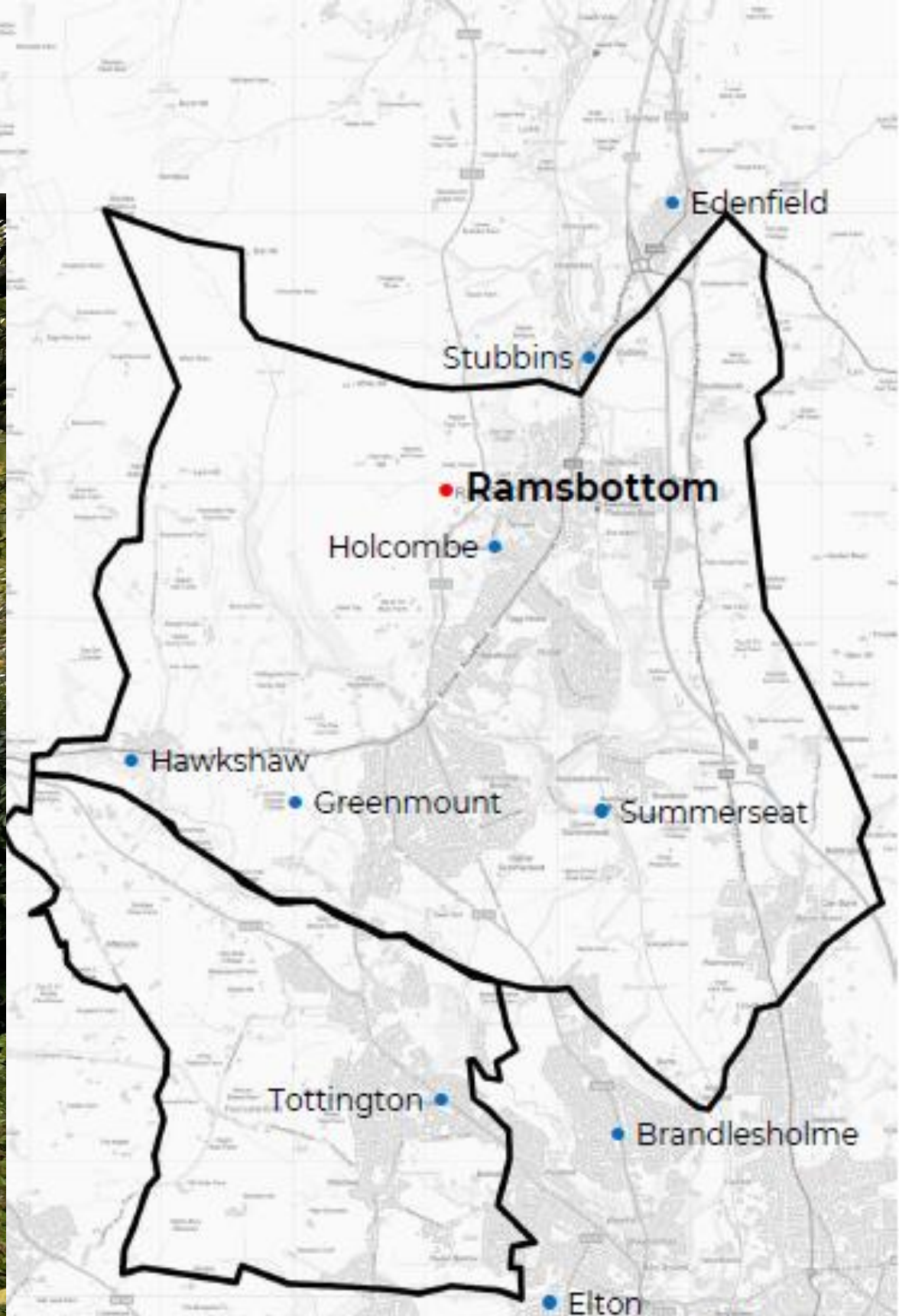


TOWNSHIP FRAMEWORKS

Township	Wards
Ramsbottom and Tottington	Ramsbottom, North Manor, Tottington
Tottington	Tottington
Bury	Elton, Moorside, Bury West, Bury East, Redvales
Radcliffe	Radcliffe North & Ainsworth, Radcliffe West, Radcliffe East
Whitefield	Unsworth, Besses, Pilkington Park
Prestwich	Holyrood, St. Mary's, Sedgley



9: RAMSBOTTOM AND TOTTINGTON



Township	Wards
Ramsbottom and Tottington	Ramsbottom, North Manor, Tottington

RAMSBOTTOM AND TOTTINGTON

Ramsbottom

Ramsbottom township is located in the north of the Borough, set against the backdrop of Holcombe Hill on the edge of the West Pennine Moors.

Ramsbottom town centre is the focal point of the township and has developed into a strong and attractive visitor destination, supported by the East Lancashire Railway, a high-quality restaurant scene, a good range of independent retailers and a popular annual events programme. This diversity has helped Ramsbottom to perform relatively well as both a town centre and as a visitor destination.

The township also includes other surrounding settlements such as Holcombe, Hawkshaw, Holcombe Brook and Summerseat, which largely comprise distinct residential communities within a semi-rural setting.

Ramsbottom and the surrounding areas are served by highway routes that pass north to south and buses which enable travel to Manchester, Bury and Bolton. Ramsbottom has a compact centre meaning that amenities are within short walking distances of each other and the National Cycle Network Route 6 passes north-south through the town centre and along the Kirklees Trail.

Tottington

Tottington township's physical geography is characterised by its position on the edge of the West Pennine Moors and the Rossendale Valley. Tottington Village is the focal point of the township which also includes distinct and largely residential settlements in Affetside, Greenmount and Walshaw.

The Kirklees Valley and Nature Trail is a key feature of the Tottington township. The trail runs along the former railway line between Greenmount and Bury town centre and also forms part of the National Cycle Network Route 6. The trail highlights the industrial heritage of the area, passing by the ruins of Tottington Mill Printworks which had a major influence on the growth of Tottington town in the early 1800's.



THE RAMSBOTTOM TOWN PLAN

A Ramsbottom Town Plan has been prepared by the Council and was published in 2022. The Plan aims to encourage sustainable travel in and around Ramsbottom.

The Plan identifies a number of transport and public realm projects that will require more detailed work to be undertaken. The conflict between pedestrian and traffic movement on Bridge Street, for example, is something that has been highlighted as an issue, but this requires more detailed survey work to determine whether public realm improvements can help to address the issue.

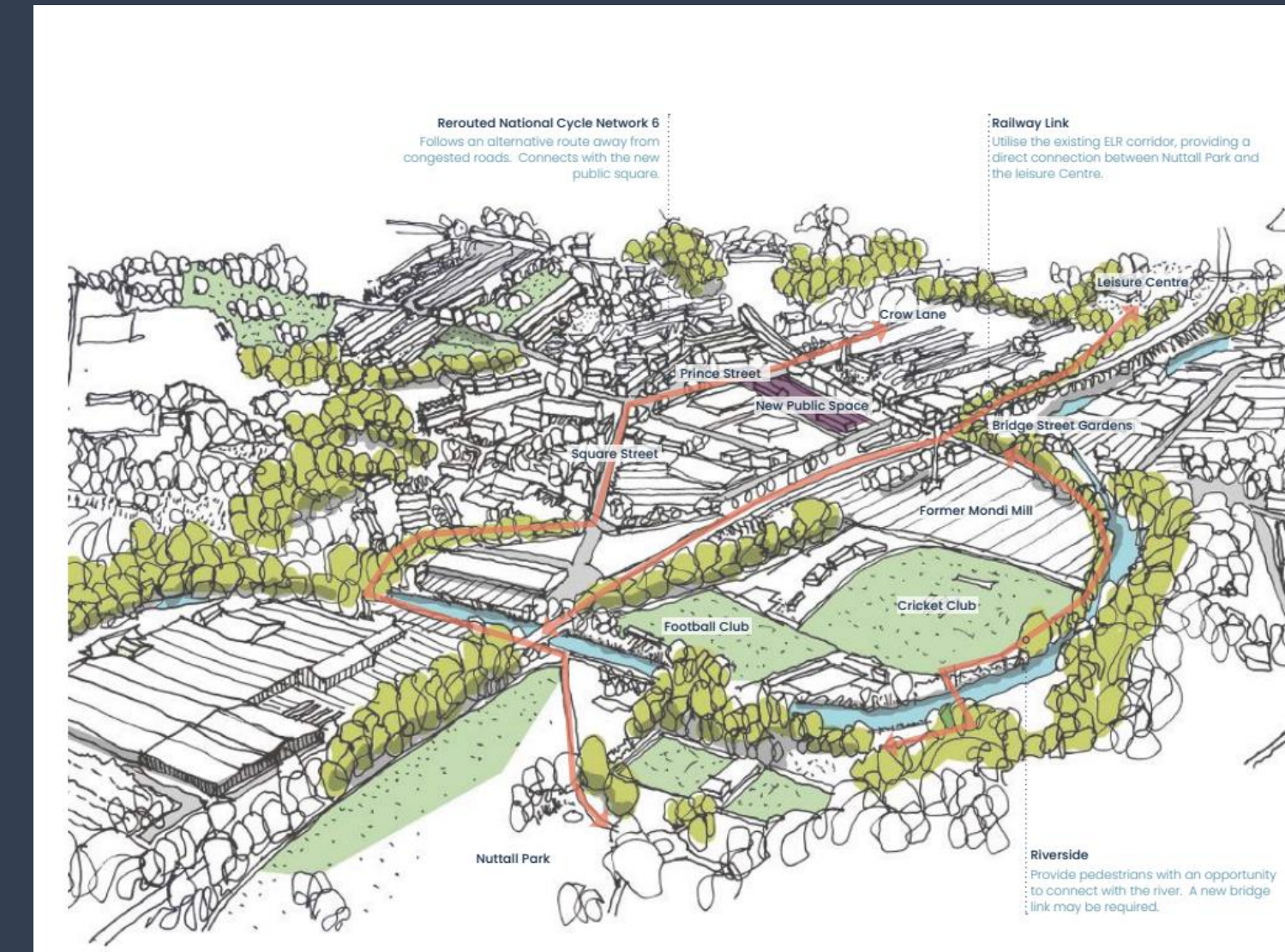
The Plan includes several high-level proposals and longer-term ideas that will help to improve the appearance and function of areas of public realm and to improve linkages between town centre assets and the movement and circulation of all town centre users.

The Plan also proposes that the National Cycle Network be re-routed along less congested roads and provide a better connection between the town centre and Nuttall Park. It also proposes new cycling and walking corridors that connect with the river.

To strike a better balance between all users, The Ramsbottom Town Plan proposes to:

- Introduce time restrictions on council owned car parks in the core of the town centre.
- Provide long stay parking at the leisure centre to increase capacity for short stay spaces in the town centre core.
- Increase provision of electric vehicle charging points.
- Introduce resident's parking schemes if needed.

We will incorporate the transport proposals identified in the Ramsbottom Town Plan into our Transport Strategy and we will take them forward as and when we can secure funding for them.



TRANSPORT ISSUES IN RAMSBOTTOM AND TOTTINGTON

Whilst the heritage and layout of Ramsbottom town centre is one of its key assets, this does cause some tensions with its function as a key visitor destination. The centre can, for example, be difficult to navigate and there are issues with pedestrian and vehicular conflict when visitor numbers are particularly high. Linkages between attractions are generally poor and the centre has a longstanding problem with the quantity and location of parking for visitors.

Movement out of Ramsbottom town centre along Bolton Road West to Holcombe Brook is often congested with limited crossing points for pedestrians. In addition, bus is the only public transport option for the Ramsbottom township and services are generally infrequent and unreliable. Journeys by bus take significantly longer than they do by car, discouraging the use of sustainable modes.

Tottington's geographical location means that journeys by public transport are significantly longer than private vehicle journey times. In addition, bus is the only public transport option for Tottington and services are generally infrequent and unreliable which discourages the use of sustainable modes to travel to and from Tottington around the borough.



Summary of transport issues in Ramsbottom and Tottington

- The north of the Borough is not served by any rail links to Bury or Manchester (the East Lancashire Railway is a Heritage line, not a commuter line).
- Bus services in and around Ramsbottom and Tottington are generally infrequent and unreliable.
- Significantly longer public transport journeys than private vehicle journey times, discouraging the use of sustainable modes to travel.
- There is a poor sense of arrival for pedestrians and motorists entering Ramsbottom at Peel Brow or via the East Lancashire Railway.
- There is conflict between pedestrian and traffic movement on Bridge Street in Ramsbottom.
- Ramsbottom town centre is congested and often dominated by HGV traffic travelling through Ramsbottom from the M66.
- The quantity and location of car parking in Ramsbottom does not meet the needs of residents and visitors.
- Poor wayfinding and signage to the National Cycle Network.
- There are limited cycle parking facilities around both Ramsbottom and Tottington
- A large area of Ramsbottom town centre is used for car parking, which reduces space for public realm and civic amenities.
- Improvements need to be made on routes to and from Tottington High School Academy to support safe sustainable movements to the school.

RAMSBOTTOM AND TOTTINGTON – WHAT WE HAVE DONE

This Transport Strategy identifies the investment priorities that we will focus on to improve transport throughout the Borough. But we are not starting from scratch. Bury is one of the ten local authority areas in Greater Manchester already working to deliver the Greater Manchester 2040 Transport Strategy in partnership with Transport for Greater Manchester and the other nine local authorities. This means that we are working towards the ambition for half of all journeys in Greater Manchester to be made by public transport, walking, wheeling or cycling by 2040. This is called the 'Right Mix' target. Our Local Transport Strategy will provide more detail on what this means for the Borough and what our local priorities are. Having a Local Transport Strategy will put us in a stronger position to identify and attract the funding we need to deliver schemes that are locally important. It will enable the Council to identify and develop proposals for transport interventions to competitively bid for monies when they become available.

What we and our partners have already done ...

- **On bus:** TfGM has introduced cheaper bus fares: there is now a £2 single journey cap (£1 for children) and a £5 AnyBus (£2.50 for children) all day cap for bus journeys throughout Greater Manchester and a weekly cap of £21 (£10.50 for children).
- **On walking and cycling:** We have carried out a review of the main walking, wheeling and cycling routes into Ramsbottom from surrounding residential areas to identify where we can improve the active travel network.
- **On parking:** We have carried out a parking survey in Ramsbottom as we know that car parking capacity in Ramsbottom is an issue. This survey includes an assessment of locations for potential new car parks.
- **On highway maintenance:** In the last two years we have spent around £500,000 on resurfacing roads in the Ramsbottom township at the locations shown in the adjacent table. We have also resurfaced Hall Street from Bradshaw Road to Bank Street in Tottington.
- **On highway maintenance:** In Ramsbottom, we have invested an additional £307,000 on preventative highway maintenance and in Tottington, we have carried out surface treatment works on roads in the Cotswold Crescent estate at a cost of £74,000.
- **On road safety:** We have delivered Bikeability cycle training to school children in years 5, 6 and 7.

Road Name	Extent of road resurfaced
Ramsbottom	
Bass Lane	Full Length
Moorway	Full Length
Walmersley Road	M66 Bridge - 40m South of M66 Slip Road
Albert Street	Full Length
Tor Avenue	Full Length
Greenside Close	Full Length
Wood Road Lane	Rowlands Road - No. 45
Westgate Avenue	Full Length
Tottington	
Hall Street	Bradshaw Road to Bank Street



RAMSBOTTOM AND TOTTINGTON - WHAT WE PROPOSE TO DO:

Bus

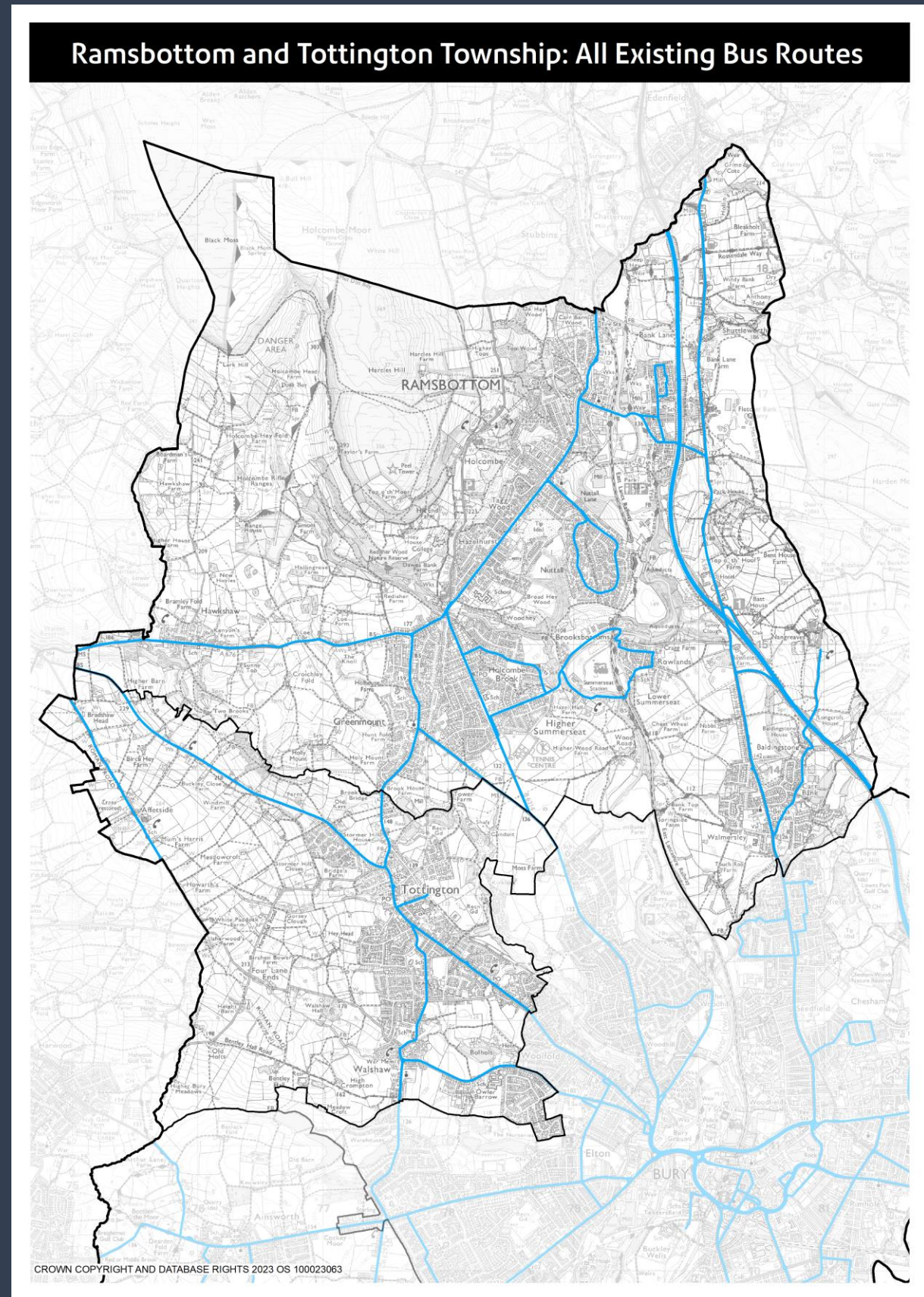
We will work with Transport for Greater Manchester to secure investments to improve bus services and infrastructure in Ramsbottom and Tottington.

Across Greater Manchester, buses are being brought back under local control for the first time since they were de-regulated in 1986 under a system called franchising.

Franchised services will start running in some parts of the Borough from September 2023 and in Ramsbottom and Tottington from March 2024.

We will seek to build on Greater Manchester's proposed high frequency bus route network and identify where additional services and routes may need to be strengthened. This could include the provision of Local Link type services to meet the needs of residents in more rural areas of Bury so they have a car-free alternative for accessing work, leisure opportunities, education and health services, as set out in Greater Manchester Bus Service Improvement Plan.

The adjacent maps shows all the routes on which buses run in Ramsbottom and Tottington.



RAMSBOTTOM AND TOTTINGTON - WHAT WE PROPOSE TO DO: BUS

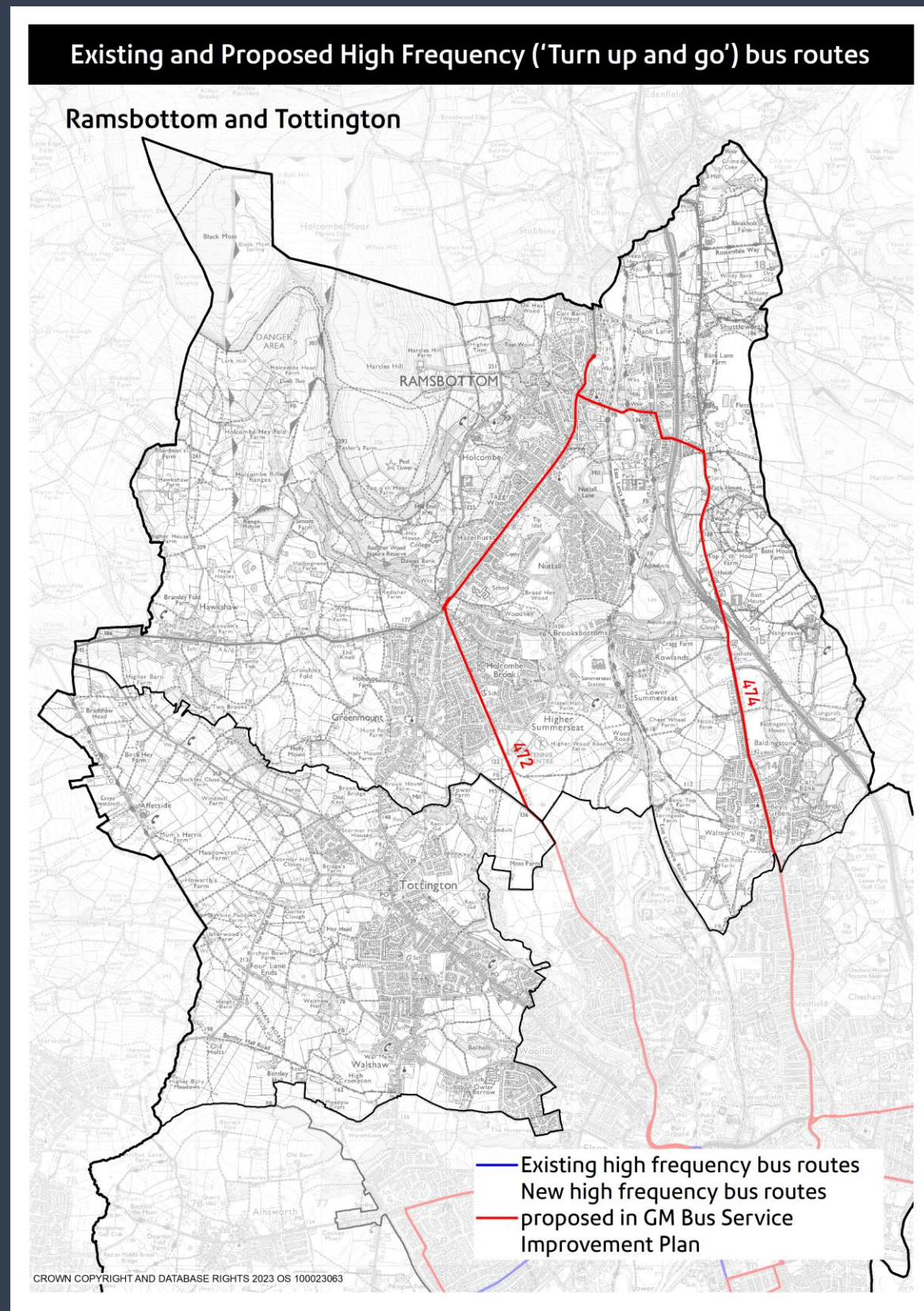
The Greater Manchester's Bus Service Improvement Plan (BSIP) set out TfGM's aim to stabilise and then strengthen bus services and routes to a minimum 'turn up and go' frequency (at least every 10 minutes per hour on Monday to Saturday daytimes) on major routes to form a 'London-style network'.

BSIP contains a target for 70 additional routes across the GM bus network to be brought up to a high frequency standard by March 2025, with a particular focus on linking key towns and district centres. The adjacent map shows which bus services and routes in Greater Manchester's proposed high frequency bus network would run through the Ramsbottom township.

The table below shows all the services in the Borough that are part of Greater Manchester's proposed high frequency bus route network. A plan of all these routes and services can be found in the bus chapter. The proposed high frequency routes in Ramsbottom are the 474 and 474 Bury-Ramsbottom circulars. These proposed high frequency routes would be an enhancement of the existing service. These would not be the only bus services in Ramsbottom and Tottington.

We will work with TfGM to identify the need for additional high frequency bus routes in Ramsbottom and Tottington.

Service	Route
163*	Manchester - Middleton - Heywood
93	Bury - Prestwich - Agecroft - Manchester
97	Bury - Unsworth - Prestwich - Manchester
98	Bury - Radcliffe - Whitefield - Manchester
135*	Bury - Whitefield - Cheetham Hill - Manchester
471*	Rochdale - Bury - Bolton
524*	Bolton - Radcliffe - Bury
472	Bury - Ramsbottom circulars
474	Bury - Ramsbottom circulars
467	Rochdale - Daniel Fold - Bamford - Bury
468	Rochdale - Greave - Bamford - Jericho - Bury
*	<i>Indicates an existing high frequency service</i>



RAMSBOTTOM AND TOTTINGTON - WHAT WE PROPOSE TO DO: Walking, Wheeling and Cycling

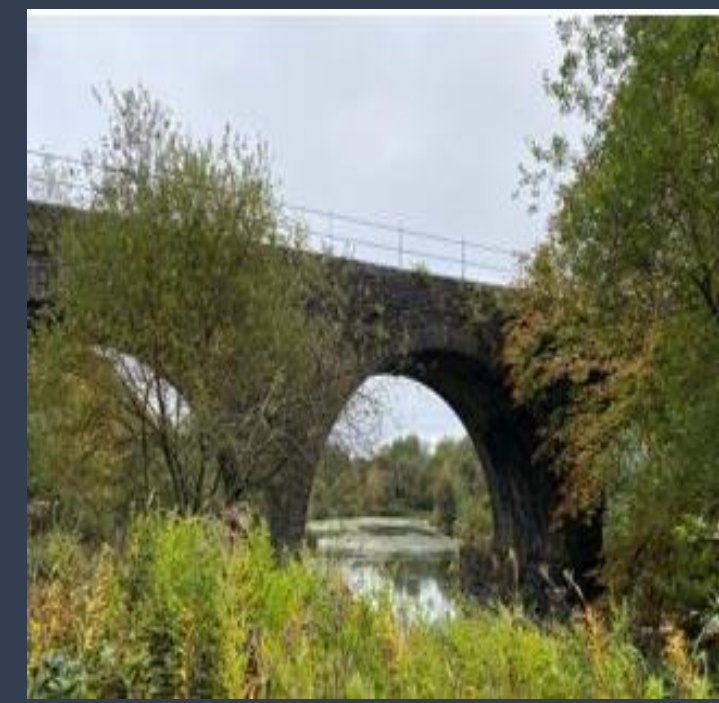
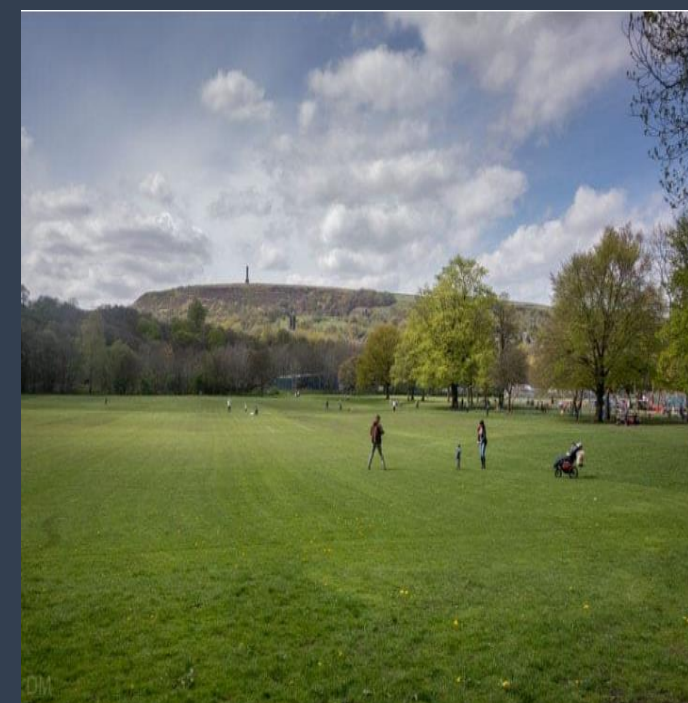
In Ramsbottom

We have £2.3 million of funding available from the Greater Manchester City Region Sustainable Transport Settlement to improve walking and cycling routes in Ramsbottom. We have until March 2027 to spend this money. We are currently developing some ideas and will be carrying out public consultation later this year. Further details can be found on the next page.

In addition to the severance caused by busy roads, rivers and railways, the steep valley sides of Ramsbottom impose another constraint on its active travel network. It is difficult to find east-west routes with reasonable gradients and the best north-south routes are heavily trafficked. National Cycle Route 6 passes through Ramsbottom, entering via Nuttall Park and leaving via Stubbins Lane, but Stubbins Lane is busy and involves a narrow rail bridge, so we will investigate alternative route options.

In Tottington

We will seek opportunities to improve active travel routes to current design standards for example, National Cycle Route 6 provides an attractive and convenient walking and cycling route through Tottington, along the former Holcombe Brook branch railway line (known locally as 'the lines' or the 'Kirklees Trail'). However, connections to, along and across Market Street (the B6213) in particular are in need of improvement.

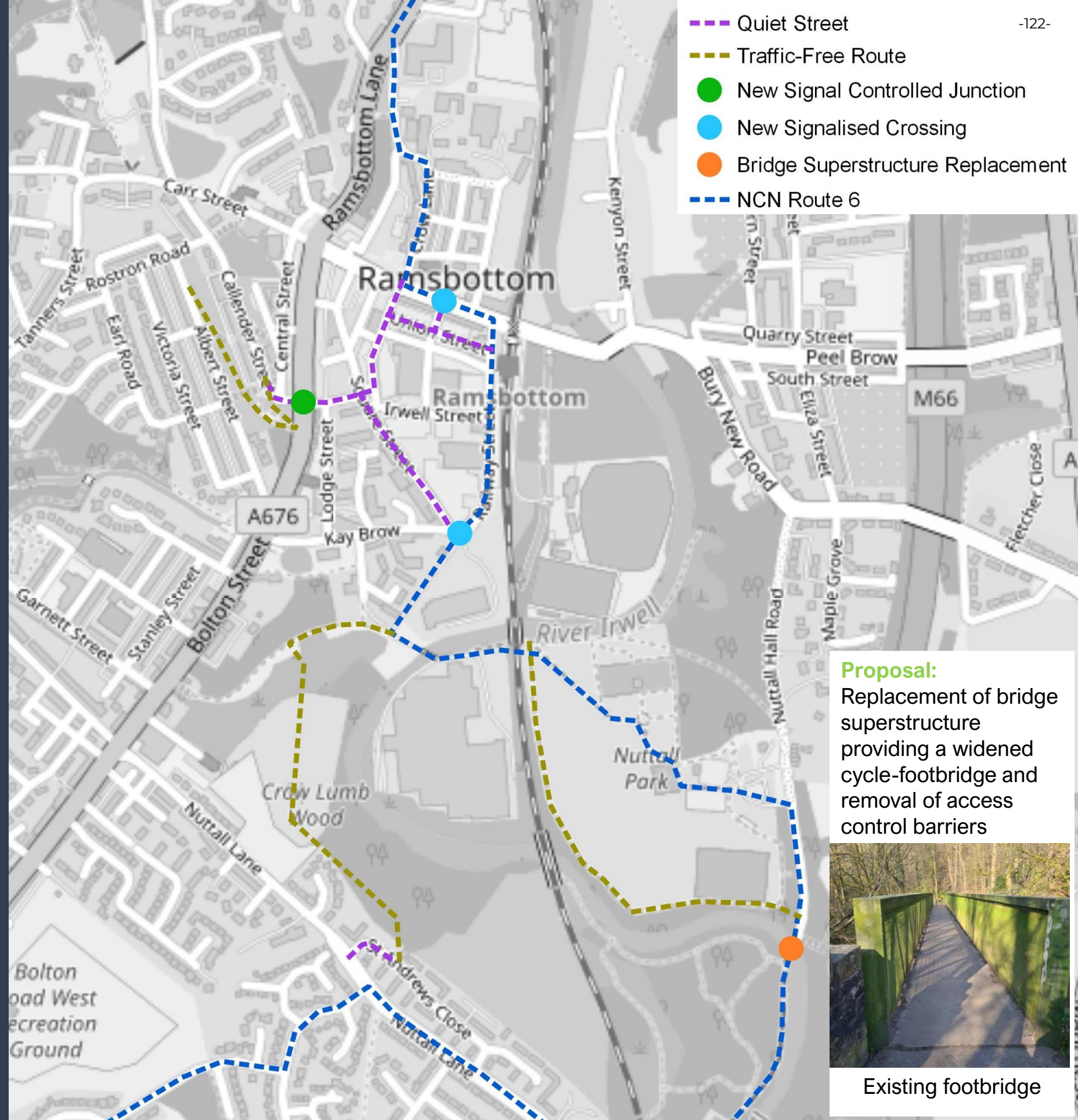


Ramsbottom Active Travel Network: Draft proposals Funding available: £2.3M CRSTS

We have secured £2.3m of City Region Sustainable Transport Settlement funding to improve walking and cycling infrastructure in and around Ramsbottom Town Centre.

The draft proposals are still being developed and will be subject to more detailed engagement and consultation later in 2023 but some of the proposed routes that are currently being considered are identified on the adjacent plan. The improvements could include:

- A new signalised crossing on Bridge Street, widening the footway by the war memorial and removing parking.
- Side road entry treatment at Crow Lane and footway widening.
- A junction improvement to Callender Steet (installation of traffic signals and green man)
- Quiet routes established on Square Street, Prince Street, Union Street and Cross Street.
- A new traffic-free shared use route through Crow Lumb Wood from St Andrew's Close to Grants Lane.
- Widening the existing footpath through Nuttall Park along river and railway into a shared use path.
- Replacement of bridge superstructure providing a widened cycle-footbridge and removal of access control barriers.



RAMSBOTTOM AND TOTTINGTON - WHAT WE PROPOSE TO DO: Highways and Parking

On highways, we propose to:

- Implement a puffin crossing at Bolton Road West (near Ada Street) in Ramsbottom and zebra crossing at Market Street, Tottington (near Laurel Street).
- Deliver a programme of preventative maintenance treatment to stop further deterioration of the road surface such as patching, micro asphalt and surface dressing. Information on which roads will receive surface dressing each year is published on the Council's website.
- Continue to deliver our Highways Investment Strategy to resurface roads that have gone beyond using any preventative treatment. Information on which roads will be treated each year is published on the Council's website.
- Continue to deliver our street lighting replacement programme to replace lighting columns that are coming to the end of their serviceable life and install energy efficient LED lamps.
- Increase the number of publicly available chargers, working a supplier to install Electric Vehicle Charging Infrastructure (EVCI) on Council land, with new infrastructure starting to be installed by Autumn 2023.
- Develop and implement a car parking strategy for Ramsbottom that addresses identified parking issues and meets the needs of the town's visitors and residents.
- Upgrade key junctions within Ramsbottom and Tottington to allow for improved highway safety, traffic flows and cater for public transport and active travel movements.



RAMSBOTTOM PARKING



CLIENT: BURY COUNCIL



RAMSBOTTOM AND TOTTINGTON - SUMMARY PLAN

We want to make sure that our Local Transport Strategy meets the needs of our residents, businesses and visitors. The adjacent table provides a summary of the key transport proposals that are currently being developed and implemented in Ramsbottom and Tottington. These range from significant new infrastructure projects to on-going maintenance of existing infrastructure, which is important.

However, we will continue to work with our partners Transport for Greater Manchester and other key stakeholders to identify further opportunities for projects that will improve Ramsbottom and Tottington's transport network. This includes identifying funding opportunities that may arise from national and regional initiatives.

Summary of Key Transport Proposals for Ramsbottom and Tottington
Bus
Roll out of bus franchising
More high frequency bus routes including on the Bury-Ramsbottom 472 and 474 circular routes
Investigate the need for new Local Link bus services in the Ramsbottom and Tottington Townships
Walking, Wheeling and Cycling
Bikeability cycle training
Implement School Streets where appropriate
Active travel route improvements in Ramsbottom Town Centre
Active travel route improvements in Tottington
Investigate options for rerouting National Cycle Network Route 6 through Ramsbottom
Highways and Parking
Road safety improvements: installation of a puffin crossing at Bolton Road West (near Ada Street).
Preventative highway maintenance
Highway Investment Strategy resurfacing programme
Expansion of publicly available Electric Vehicle Charging Infrastructure (EVCI)
Develop a parking strategy for Ramsbottom to meet resident and visitor needs
Upgrade key junctions within Ramsbottom and Tottington to allow for improved highway safety, traffic flows and cater for public transport and active travel movements
Implement a puffin crossing at Bolton Road West (near Ada Street) in Ramsbottom and zebra crossing at Market Street, Tottington (near Laurel Street).