

14

Northern Gateway



Bury
COUNCIL

 **ROCHDALE**
BOROUGH COUNCIL

GMCA GREATER
MANCHESTER
COMBINED
AUTHORITY

ATOM VALLEY – NORTHERN GATEWAY

Greater Manchester's ambition is to deliver sustainable and inclusive growth to address issues of deprivation, worklessness and inequalities in employment opportunities.

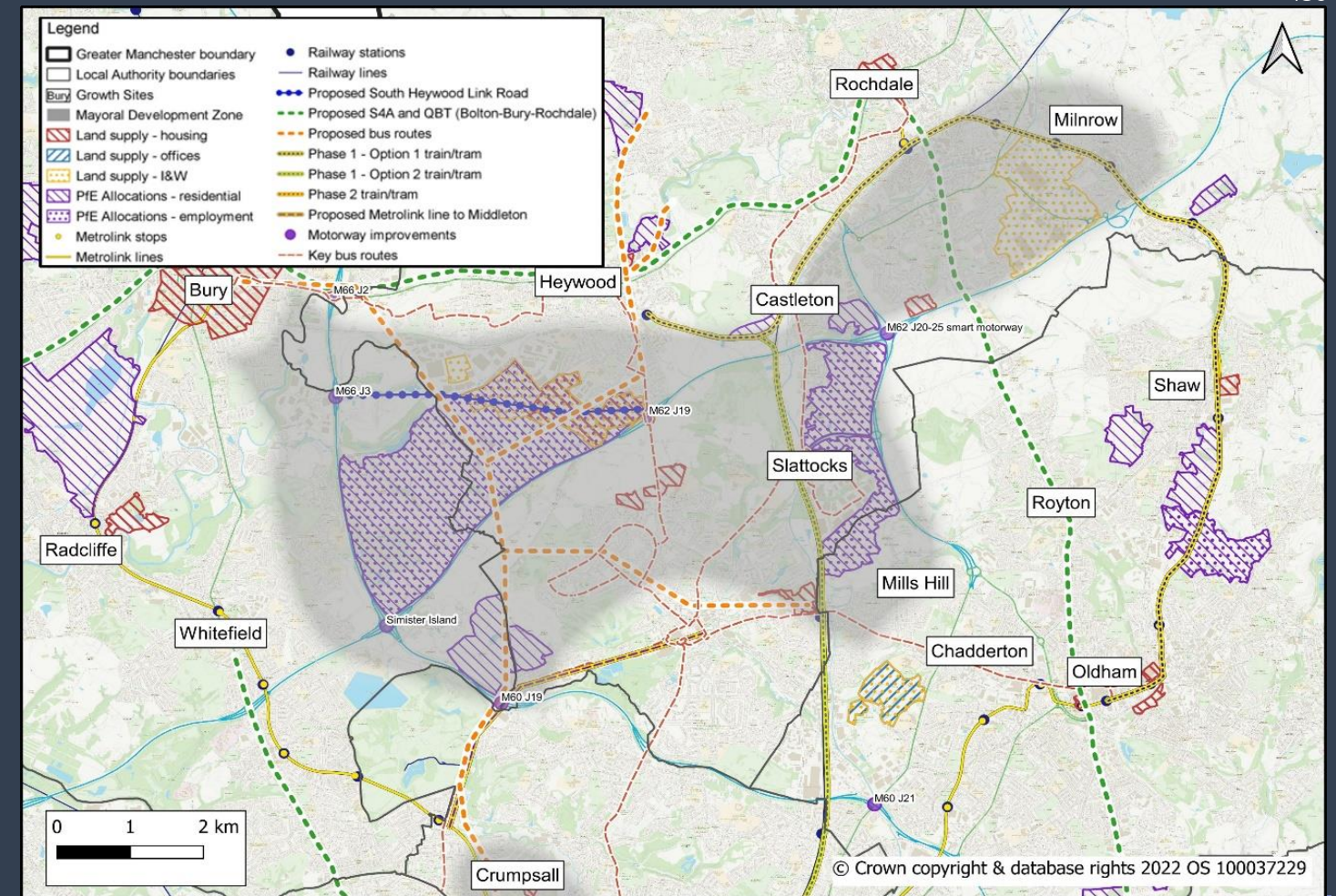
This is a particular issue in the north of the conurbation and there are aspirations to address the economic imbalance that exists within Greater Manchester.

The wider Greater Manchester Strategy seeks to grow the economy and identifies a number of Growth Locations to help achieve this. One of these is the North-East Growth Location, which transcends across Bury, Rochdale and Oldham. The area has been branded as *Atom Valley*.

The growth opportunities within Atom Valley are of regional and national significance and the area has been given added status within Greater Manchester as a Mayoral Development Zone (MDZ).

The Atom Valley MDZ has been created to articulate the importance of bringing the sites forward in a sustainable manner such that it delivers the ambition to secure inclusive growth, thereby benefiting existing residents, which will then benefit the wider Atom Valley Growth Location, the wider conurbation and beyond.

Atom Valley comprises three key sites: Northern Gateway (the largest of the sites); Stakehill; and Kingsway. Together, these three sites propose to deliver 20,000 new jobs and 7,000 new homes.



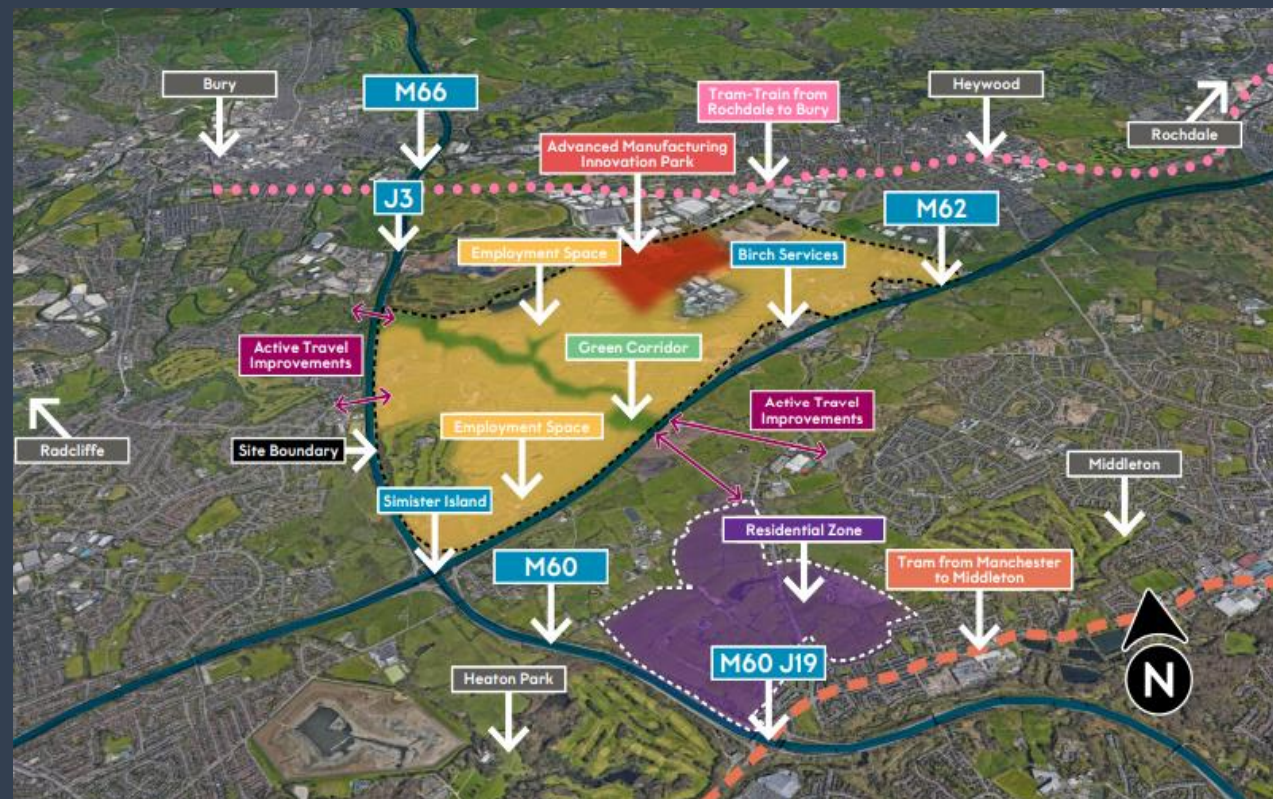
NORTHERN GATEWAY

Northern Gateway is the most significant proposal in the north of the Greater Manchester conurbation and is Bury's largest strategic allocation in the Places for Everyone Plan.

The site is positioned in a strategically important intersection around the M60, M62 and M66 motorways. It represents a highly accessible opportunity for growth in Greater Manchester, with wider potential benefits on a regional and national level.

The area is made up of two key allocations which fall within Bury and Rochdale and will deliver around 1.2M square metres of employment land and around 2,750 new homes (of which 1,550 are in Bury) .

A key priority for Bury Council is to ensure that Bury residents can access Northern Gateway and the potential new jobs.







£650M
CONSTRUCTION
INVESTMENT




20,000
Jobs




2,750
RESIDENTIAL
UNITS



£14M P.A.
IN BUSINESS RATE
REVENUE



2,000
supporting Jobs



1.2 MILLION m²
NEW FLOORSPACE
INCL. ADVANCED
MANUFACTURING,
INDUSTRIAL AND
WAREHOUSE SPACE

DRAFT NORTHERN GATEWAY TRANSPORT PLAN

A more detailed Northern Gateway Transport Strategy will support the site as it moves forward and this will provide more information around the key strategic transport interventions that are proposed to support this important site.

Key Proposals

- Major investment on the motorways at M62 and M66 (Junctions 2 and 3).
- Light rail links between Bury and Rochdale, which could be linked into the site via other transport connections;
- New and amended bus services in and around the site;
- Active travel routes to facilitate cycling and walking to and within the site; and
- Improvements to the existing local highway network.

Key schemes from the Transport Strategy are reflected in the adjacent map and interventions that affect Bury Council have been included within this Local Transport Strategy, including junction improvements for the M66.

